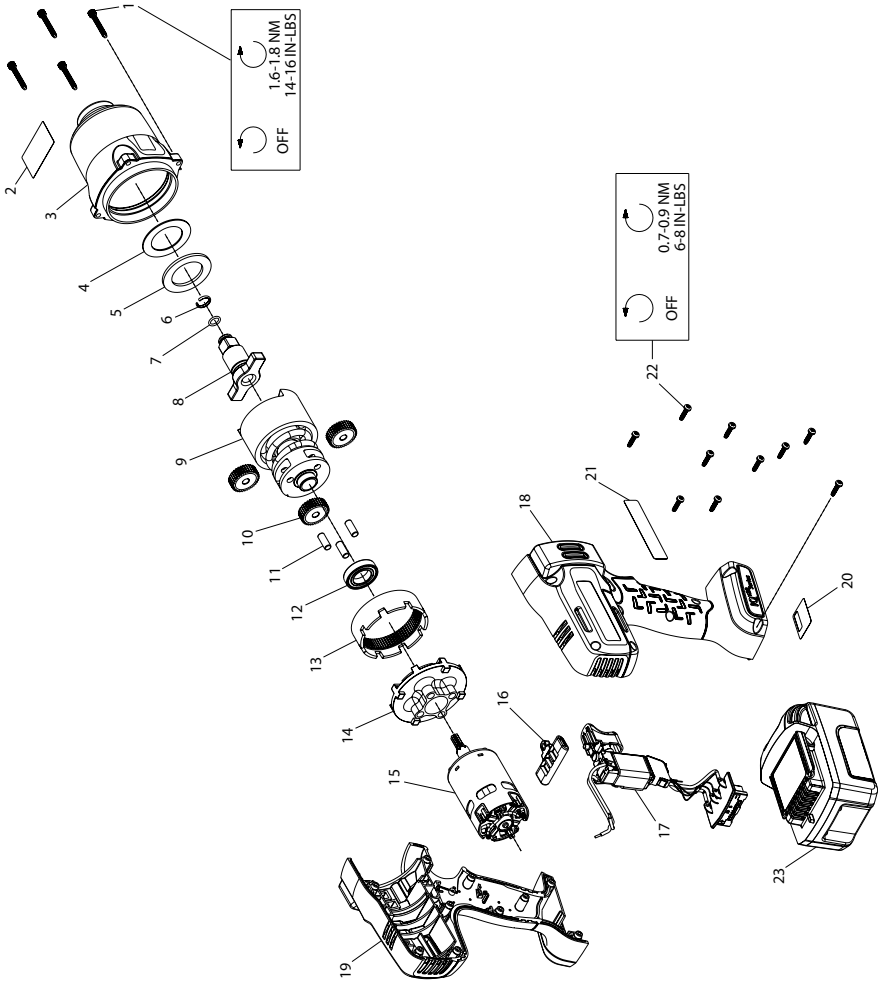


W7000 Series Cordless Impact Wrench - Exploded View



(Dwg. 48380281)



W7000 Series Cordless Impact Wrench - Parts List

Item	Part Description	Part Number	Item	Part Description	Part Number
*	Hammer Case Kit	W7150-K727	16	Forward/Reverse Actuator	W7150-K75
1	Screw, Hammer Case (4 Required)	---	17	Trigger & Battery Connector Kit	
2	Warning Label	---		for W7150, W7250	W7150-K93
3	Hammer Case Assembly	---		for W7150EU, W7250EU	W7150EU-K93
4	Washer, Rubber	---	*	Housing Kit	W7150-K40
5	Washer, Steel	---	18	Right Housing	---
*	Socket Retainer Kit	2125QTi-K425	19	Left Housing	---
6	Socket Retainer	---	20	Serial Number Label	---
7	O-Ring or Socket Retainer Spring	---	21	Information Label	---
*	Anvil Kit		22	Screw, Housing (10 Required)	
	for W7150	W7150-K626	*	Fastener Kit	
	for W7250	W7250-K414	1	Screw, Hammer Case (4 Required)	
8	Anvil	---	22	Screw, Housing (10 Required)	
*	Socket Retainer Kit	---	*	Label Kit	
9	Impact Mechanism Kit	W7150-K724	2	Warning Label	
*	Planetary Gear Kit	W7150-K37	20	Serial Number Label	
10	Planet Gear (3 Required)	---	21	Information Label	
11	Pin (3 Required)	---	23	20V Li-Ion Battery Pack	
12	Bearing, Gear Carrier	---	*24	Carrying Case	
13	Ring Gear	---	*25	Protective Boot	
14	Ring Gear Holder	---	*26	Grease (1 lb can)	
15	Electric Motor Kit		*27	Grease (8 lb can)	
	for W7150, W7250	W7150-K54	*28	Grease Gun	
	for W7150EU, W7250EU	W7150EU-K54			

* Not illustrated

Parts and Maintenance

When the life of the tool has expired, it is recommended that the tool be disassembled, degreased and parts be separated by material so that they can be recycled.

Tool repair and maintenance should only be carried out by an authorized Service Center.

Refer all communications to the nearest **Ingersoll Rand** Office or Distributor.

Related Documentation

For additional information refer to:

Cordless Impact Wrench Product Safety Information Manual 04581146.

Cordless Impact Wrench Product Information Manual 47122262 (for models W7150/W7250).

Cordless Impact Wrench Product Information Manual 48391130 (for models W7150EU/W7250EU).

Manuals can be downloaded from www.ingersollrandproducts.com.

