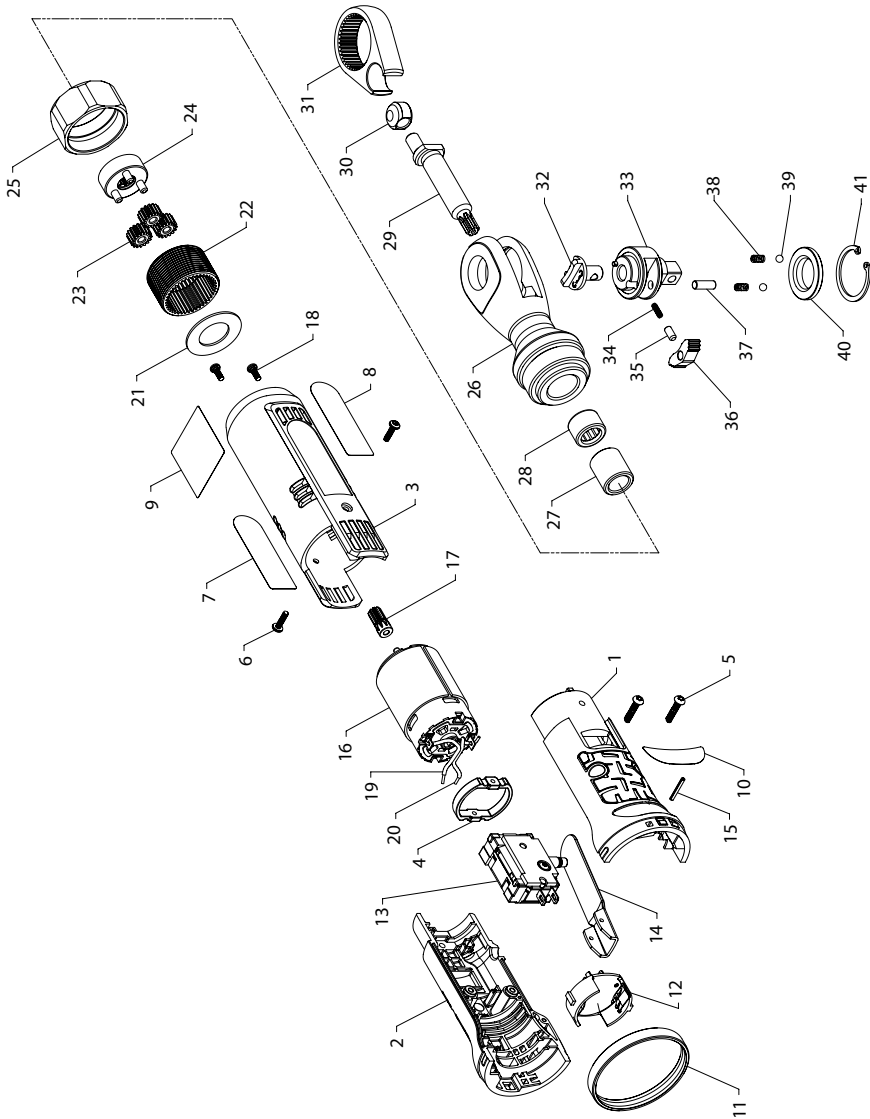


# R380 and R385 Cordless Ratchet Wrench Exploded Diagram



(Dwg. 45507118)

## R380 and R385 Cordless Ratchet Wrench Parts List

Item	Part Description	Part Number	Item	Part Description	Part Number
	Housing Kit		29	Crankshaft	107XPA-35
	for R380	R380-K40	30	Drive Bushing	170-36
	for R385	R385-K40	31	Yoke	109XPA-37
1	Right Housing	---		Ratchet Head Kit	
2	Left Housing	---		for R380	107XPA-TRK1
3	Front Housing	---		for R385	1077XPA-TRK1
4	Coupling Ring	R380-K337	32	Reverse Button	107XPA-38
5	Screw, Grip (2 per kit)	---	33	Anvil Assembly	
6	Screw, Housing (2 per kit)	---		for R380	107XPA-A44
7	Nameplate	---		for R385	1077XPA-A44
8	Information Label	---	34	Lock Spring	---
9	Warning Label	---	35	Lock Pin	---
10	Voltage Label	---	36	Pawl	---
11	Housing Ring	W040-K339	37	Pawl Retaining Pin	---
12	Battery Connector	R380-K56	38	Friction Spring (2 per kit)	---
13	Switch	R380-K93	39	Friction Ball (2 per kit)	---
	Trigger Lever Kit	R380-K273	40	Thrust Washer	---
14	Trigger Lever	---	41	Retaining Ring	---
15	Trigger Lever Pin	---		Fastener Kit (includes items 5, 6 and 18)	R380-K105
	Electric Motor Kit	R380-K54		Label Kit (includes items 7-10)	
16	DC Motor	---		for R380	R380-K99
17	Pinion	---		for R385	R385-K99
18	Screw, Motor Mount (2 per kit)	---		Pawl Kit (includes items 34-37)	107XPA-K43
19	Wire, Positive	---		Spring Kit (includes items 38-41)	107XPA-SK
20	Wire, Negative	---		Grease	
21	Washer	R380-K18		IR # 67 (1 lb can) - for Gearing	67-1 LB
	Gearing Kit	170-GK		IR # 67 (8 lb can) - for Gearing	67 8 LB
22	Internal Gear	---		IR # 70 (1 lb can) - for Ratchet Head	70 1 LB
23	Planet Gear (3 per kit)	---		IR # 70 (8 lb can) - for Ratchet Head	70 8 LB
24	Spindle Assembly	---		Spline Wrench (for removal of item 22)	170-SW
25	Coupling Nut	170-27		14.4V Li-Ion Battery Pack	BL144
	Ratchet Housing Assembly	107XPA-A322		14.4V Ni-Cd Battery Pack	N144
26	Ratchet Housing	---		Battery Charger	BC10
27	Crankshaft Bushing	---			
28	Crankshaft Needle Bearing	---			

### Parts and Maintenance

When the life of the tool has expired, it is recommended that the tool be disassembled, degreased and parts be separated by material so that they can be recycled.

Tool repair and maintenance should only be carried out by an authorized Service Center.

Refer all communications to the nearest **Ingersoll Rand** Office or Distributor.

### Related Documentation

For additional information refer to:

Cordless Ratchet Wrench Safety Information Manual 80232929.

Cordless Ratchet Wrench Product Information Manual 80232937.

Manuals can be downloaded from [www.irtools.com](http://www.irtools.com).

