



Form 16573305

Edition 2

December 2005

Air Grinder

88V Series

Parts Information

PRO▶
TECH

Professional Technologies Sweden AB

Munkerödsvägen 3

444 32 STENUNGSUND

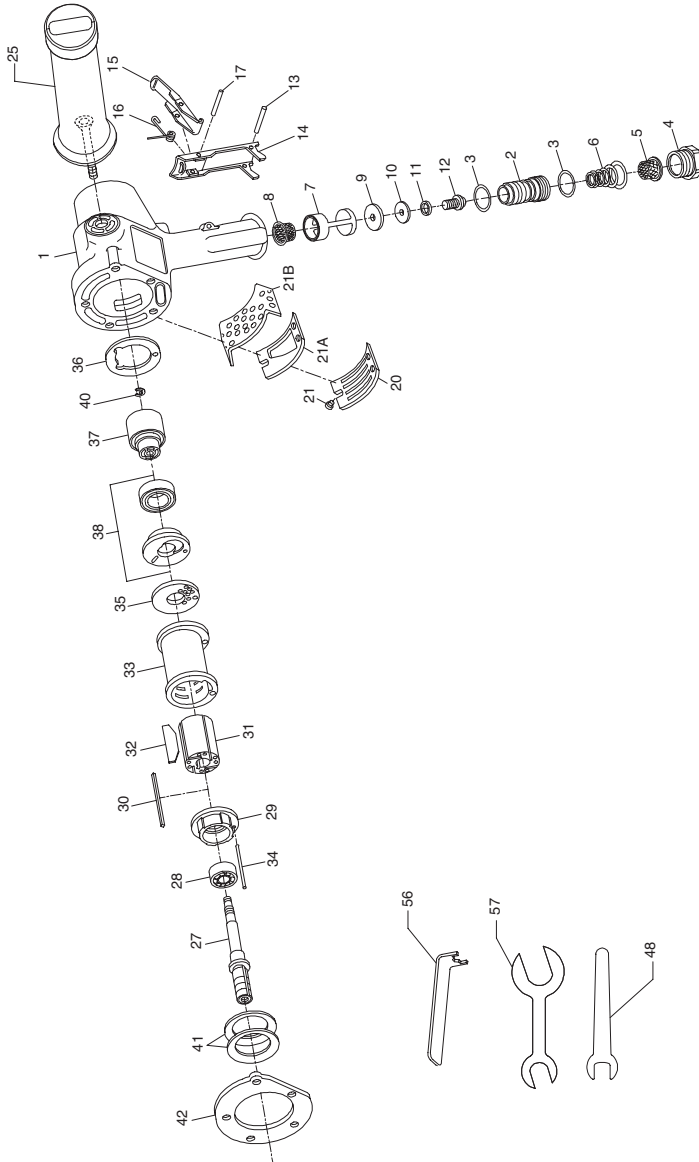
Tel 0303-89 135 - www.protech.nu



Save These Instructions

IR Ingersoll Rand®

88V Series Air Grinder Exploded Diagram



(Dwg. TPA731-4)

88V Series Air Grinder Parts List

Item	Part Description	Part Number	Item	Part Description	Part Number
+ 1	Cylinder Case Assembly				
	for models ending in -EU	88V60-EU-A25	21	Exhaust Deflector Screw (3)	99V60-200
	for all other models	88V60-A25	21A	Exhaust Deflector (for 88V60-EU, 88V77 and 88V85)	88V77-123
2	Throttle Valve Assembly	88V60-A302			
† 3	Seal (2)	C321-606	21B	Exhaust Baffle (for 88V60-EU, 88V77 and 88V85)	88V77-311
4	Inlet Bushing	88V60-38			
† 5	Inlet Bushing Screen	834-61	25	Dead Handle	ERG0-A48
† 6	Throttle Valve Spring	99V60-262	27	Arbor	
7	Throttle Valve Seat Support Assembly	88V60-A303		for 88V60 (Blue)	88V60-204-P10
				for 88V77 (Green)	88V77-204-P10
				for 88V85 (Red)	88V85-204-P10
† 8	Air Strainer Screen	834-61			
† 9	Valve Seat	R4-159A	28	Front Rotor Bearing	R380-105
10	Valve Seat Washer	99V60-155	29	Front End Plate	88V60-11
11	Valve Screw Lock Washer	H54U-352	* 30	Rotor Key	88V60-70
12	Valve Seat Screw	PS3-83	31	Rotor	88V60-53
* 13	Throttle Lever Pin	MR-100	† 32	Vane Packet (set of 4 Vanes)	88V60-42-4
14	Locking Lever Assembly	88V60-A400	33	Cylinder	88V60-3
15	Lever Lock	88V60-402	* 34	Cylinder Dowel	88V60-98
16	Lever Lock Spring	88V60-405	35	Rear End Plate	88V60-12
17	Lever Lock Pin	502B-120	† 36	Rear End Plate Gasket	88V60-739
*	Nameplate Kit (for 88V60-EU-A25)	88V-EU-K301	37	Controller Assembly	
				for 88V60 (6000 rpm) (Blue)	88V60-A524
				for 88V77 (7700 rpm) (Green)	88V77-A524
				for 88V85 (8500 rpm) (Red)	88V85-A524
*	Nameplate Screw (for 88V60-EU-A25) (4)	BN403-302			
*	Warning Label (for 88V60-EU-A25)	EU-99	38	Rotor Bearing Seal Assembly	88V60-A28
*	Nameplate Kit (for 88V60-A25)	88V-K301	† 40	Controller Retaining Ring	88V60-118
	Nameplate Screw (4)	BN403-302	41	Motor Clamp Belleville Washer (2)	88V60-207
	Warning Label	WARNING-2-99	† 42	Cylinder Case Gasket	88V60-283
20	Exhaust Deflector	99V60-23			

* Not illustrated.

• To keep downtime to a minimum, it is desirable to have on hand certain repair parts. We recommend that you stock one (pair or set) of each part indicated by a

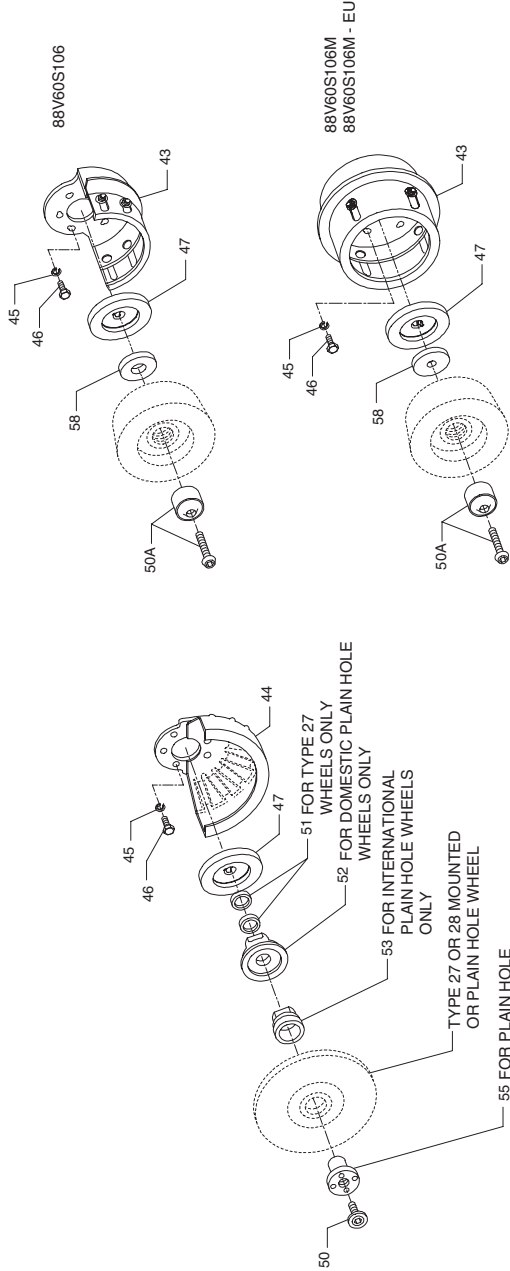
bullet (•) for every four tools in service.

+ Whenever a new Cylinder Case Assembly is installed, select the correct Nameplate from the Nameplate Kit and attach it to the Cylinder Case with the Nameplate

Screws.

† Indicates Tune-up Kit part.

88V Series Air Grinder Guards, Flanges and Spacers Exploded Diagram



(Dwg. TPA732-3)

88V Series Air Grinder Guards, Flanges and Spacers Parts List

Item	Part Description	Part Number	Item	Part Description	Part Number
43	Cup Wheel Guard		55	Depressed Center Wheel Nut (for Plain Hole Wheels)	99V85-186
	for 88V60S106	88V60-A216			
	for 88V60S106M	88V60-A216M	56	Depressed Center Wheel Nut Spanner Wrench	D32-26
44	Depressed Center Wheel Guard (for Type 27 or 28 Wheels)		57	Disc Wheel Flange Wrench (for 88V60P107M, 88V60P109M, 88V77107M and 88V85P107M)	7RAQT4-254
	for 88V60P109 and 88V60P109M	88V60-106-9			
	for 88V60P107, 88V60P107M, 88V77P107, 88V77P107M and 88V85P107M	88V60-106-7	58	Wheel Flange (for 88V60S106, 88V60S106M and 88V60S106M-EU)	88V60-86A
45	Cylinder Case Screw Lock Washer (5)	10BM-67	*	Piped-Away Exhaust Kit	88V60-K184
46	Cylinder Case Screw (5)	99V60-638	*	Exhaust Hose	99V60-184
47	Autobalancer Assembly	99V60-A713	*	Exhaust Hose Clamp	DG30-67
48	Autobalancer Wrench	88V60-169	*	Exhaust Elbow	88V60-167
50	Wheel Retaining Screw (for Type 27 and Type 28 Mounted Wheels and Type 28 Plain Hole Wheels)	99V60-219	*	Exhaust Elbow Gasket	99V60-49
			*	Exhaust Elbow Screw (3)	FEA100-112
			*	Exhaust Hose Band Assembly	99V60-A927
50A	Wheel Retaining Screw Assembly (for Type 6 or Type 11 Cup Wheels)	99V60-A219C	*	Cap Screw (2)	JC3350-103
			*	Nut (6)	G8-120A
*	Wheel Retaining Screw Wrench	88V-562	*	Exhaust Hose Band (4)	99V60-927
51	Depressed Center Wheel Spacer (for Type 27 Plain Hole Wheels) (2)	99V-286	*	Screw (4)	MT1-36-7/8
			*	Tool Kit	88V60-K950
52	Depressed Center Wheel Flange (for 7" and 9" diameter Type 27 and Type 28 Plain Hole Wheels)	99V60-386	*	Controller Wrench	88V60-950
			*	Seal Pressing Tool	99V60-951
			*	Bearing Clamp Assembly	99V60-A952
53	Depressed Center Wheel Flange Assembly (for 180 mm and 230 mm diameter Type 27 Plain Hole Depressed Center Wheels)	99V60-386-M	*	Deflector Screw Wrench	R2J-562
			*	Tune-up Kit (includes illustrated parts: 3 [2], 5, 6, 9, 32, 36, 40 and 42)	88V/88H-TK3

* Not illustrated.

Parts and Maintenance

When the life of the tool has expired, it is recommended that the tool be disassembled, degreased and parts be separated by material so that they can be recycled.

Tool repair and maintenance should only be carried out by an authorized Service Center. Refer all communications to the nearest **Ingersoll-Rand** Office or Distributor.

Related Documentation

For additional information refer to:
 Product Safety Information Manual 04584959.
 Product Information Manuals 16573222 and 16576092.
 Maintenance Information Manual 16573362.

Manuals can be downloaded from www.irttools.com.

www.irttools.com

© 2005 Ingersoll-Rand Company

