



16574592
Edition 1
January 2006

Air Screwdrivers

41 Series

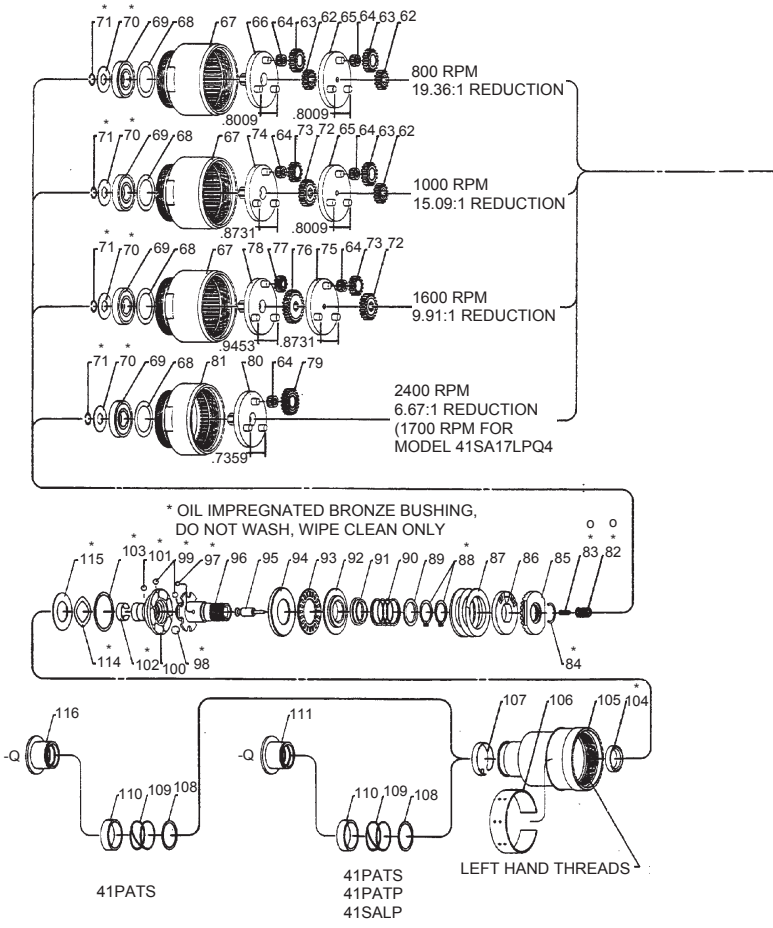
Parts Information



Save These Instructions

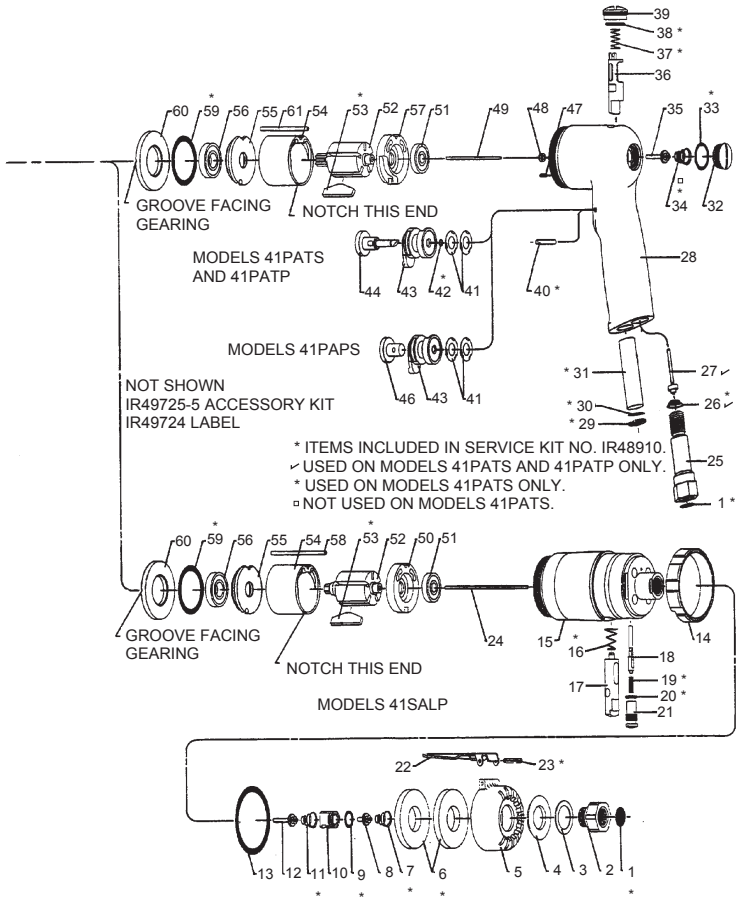
 **Ingersoll Rand**[®]

41 Series Air Screwdriver Exploded Diagram



(Dwg. TPA898-4)

41 Series Air Screwdriver Exploded Diagram



(Dwg. TPA898-4)

41 Series Air Screwdriver Parts List

Item	Part Description	Part Number	Item	Part Description	Part Number
1	Screen	IR33911		for models 41SA8LP,	
2	Inlet Adapter	IR46377		41SA10LP and 41SA17LP	IR47726
3	Spacer	IR47205		for model 41SA25LP	IR47725
4	Diffuser Washer	IR46449		Pistol Grip models	
5	Exhaust Cap	IR46448		(includes items 51 through 57)	
6	Filler (2)	IR46452		for models 41PA8PS,	
7	Spring	IR41654		41PA10PS, 41PA16PS,	
8	Valve Assembly	IR46354-2		41PA8TS, 41PA10TS,	
9	O-Ring	IRY325-11		41PA16TS, 41PA8TP,	
10	Valve Block	IR48335-1		41PA10TP and 41PA16TP	IR48159-1
11	Spring	IR41654		for models 41PA24PS,	
12	Valve Assembly	IR46354-1		41PA24TS and 41PA24LP	IR48158-1
13	O-Ring	IR48347-1	50	Rear End Plate	IR46312-1
14	Reverse Sleeve	IR48337-2	51	Bearing	IR47724
15	Head and Bushing Assembly	IR49720	52	Rotor	
16	Spring	IR41654		Lever Throttle models	
17	Valve Body	IR48349-2		for 41SA25LP	IR46469
18	Valve Stem	IR48342-2		for all other lever throttle models	IR46453
19	Spring	IR31058		Pistol Grip models	
20	O-Ring	IRY325-10		for 41PA24P, 41PA24TS	
21	Cap	IR48338-2		and 41PA24LP	IR46469
22	Lever	IR48246-1		for all other pistol grip models	IR46453
23	Roll Pin	IRY178-28	53	Vane (5)	IR46413-5
24	Throttle Rod (lever throttle models)		54	Cylinder	IR46311
	for 800, 1000 and 1700 rpm models (4.452" long)	IR46511-445	55	Front End Plate	IR47722
	for 2500 rpm models (3.942" long)	IR46511-394	56	Bearing	IRY65-13
			57	Rear End Plate	IR48162-1
			58	Locating Pin (lever throttle models)	IR47723-2
25	Inlet Adapter	IR46385	59	O-Ring	IRY325-214
26	Spring	IR41654	60	Spacer	IR46412
27	Valve Rod Assembly	IR46354	61	Locating Pin (pistol grip models)	IR47723-1
28	Housing		62	Sun Gear (1 or 2) (4.4:1 ratio) (15 teeth)	IR46466
	for model 41PA8PS	IR49712	63	Planet Gear (3 or 6) (4.4:1 ratio) (18 teeth)	IR46900
	for models 41PA8TS and 41PA8TP	IR49713	64	Needle Bearing (3 or 6)	IR42315
			65	Carrier Assembly (4.4:1 ratio)	IR46522
29	Retaining Ring	IRY147-56	66	Spindle Assembly (4.4:1 ratio)	IR47753
30	Screen	IR48808-1	67	Ring Gear (double reduction)	IR48904
31	Muffing	IR48443-1	68	Spacer	IR46496
32	End Cap	IR48146-1	69	Bearing	IRY65-13
33	O-Ring	IRY325-15	70	Washer	IR47694
34	Spring	IR41654	71	Snap Ring	IRY142-2
35	Valve Rod Assembly	IR46354	72	Sun Gear (3.43:1 ratio) (21 teeth)	IR46465
36	Reverse Valve	IR48133-1	73	Planet Gear (3) (3.43:1 ratio) (15 teeth)	IR46899
37	Spring	IR48304-1	74	Spindle Assembly (3.43:1 ratio)	IR47752
38	O-Ring	IRY325-12	75	Carrier Assembly (3.43:1 ratio)	IR46521
39	Top Cap	IR48145-1	76	Sun Gear (2.89:1 ratio) (27 teeth)	IR46464
40	Pin (for 41PA models only)	IR49754	77	Planet Gear (3) (2.89:1 ratio) (12 teeth)	IR46460
41	Spring (2)	IR48138-1	78	Spindle Assembly (2.89:1 ratio)	IR47751
42	O-Ring	IR48139-1	79	Planet Gear (3) (6.67:1 ratio) (21 teeth)	IR46901
43	Reverse Cam	IR48132-1	80	Spindle Assembly (6.67:1 ratio)	IR47750
44	Trigger	IR48148-1	81	Ring Gear (single reduction)	IR48905
46	Button	IR48149-1	82	Spring	IR47709
47	Roll Pin	IRY178-211	83	Spring	IR48333-1
48	Bushing	IR48362-1		Auto Shut-Off Clutch Assembly	
49	Throttle Rod (pistol grip models) (800, 1000 and 1600 rpm models) (3.942" long)	IR46511-394		for models 41PA8PS, 41PA8TP and 41SA25LP	
	(2400 rpm models) (3.410" long)	IR46511-341		(includes items 82 and 83 and 84 thru 103)	IR48303-3
	Motor Assembly			for models 41PA24TS	
	Lever Throttle models (includes items 50 through 56)			(includes items 84 thru 103)	IR48303-7

41 Series Air Screwdriver Parts List

Item	Part Description	Part Number	Item	Part Description	Part Number
84	Snap Ring	IRY110-105	103	Retainer Ring	IR48300-1
85	Adjustment Nut	IR46895	104	Bushing	IR46360
86	Adjustment Washer	IR48093	105	Clutch Housing (includes items 104 and 106)	
87	Clutch Spring			for lever throttle models	IR48901
	for models 41PA8PS, 41PA10PS, 41PA8TS, 41PA10TS, 41PA8TP, 41PA10TP, 41SA8LP and 41SA10LP	IR48047		for pistol grip models	IR48901
			106	External Adjustment Sleeve	IR46534
			107	Retaining Clip and Pin	IR47782
			108	Retaining Ring	IR47779
			109	Spring	IR47778
	for models 41PA16PS, 41PA16TS, 41PA16TTP and 41SA17LP	IR48095	110	Bushing	IR47775
			111	Sleeve	IR47702
			114	Wave Washer	IR45645
	for models 41PA24PS, 41PA24TS, 41PA24TP and 41SA25LP	IR48096	115	Thrust Bearing Race	IR42364
			116	Sleeve	IR47702-1
88	Retaining Ring (2)	IRY145-18		Service Kit (includes items 1, 6[2], 7, 9, 11, 16, 19, 20, 23, 26, 29, 30, 31, 33, 34, 37, 38, 40, 42, 53, 59, 70, 71, 82, 83, 84, 88, 97 [6], 98 [6], 99 [23], 101, 102 and 103)	
89	Guide	IR48295-1			IR48910
90	Spring	IR47064			
91	Ball Sleeve	IR48294-1	*	Accessory Kit	IR49725-6
92	Thrust Race	IR48094	*	Clutch Spring	IR48095
93	Thrust Bearing	IR38995	*	Clutch Spring	IR48047
94	Thrust Race	IR48301-1	*	Clutch Spring	IR48096
95	Plunger	IR48293-2	*	Clip Ball	IR48426-1
96	Spindle	IR48299-1	*	Bag	IR49746
97	Ball (6)	IRY16-203	*	Warning Label	
98	Ball (6)	IRY16-206		for all models ending in -EU	EU-99
99	Ball (23)	IRY16-204		for all other models	WARNING-5-99
100	Bit Holder	IR48298-1	*	CE Label	IR49882
101	Ball	IRY16-204	*	Rotation Label	IR49884
102	Retaining Clip	IR47695	*	Forward-Reverse Label	IR49931

* Not illustrated.

Parts and Maintenance

When the life of the tool has expired, it is recommended that the tool be disassembled, degreased and parts be separated by material so that they can be recycled.

Tool repair and maintenance should only be carried out by an authorized Service Center. Refer all communications to the nearest **Ingersoll-Rand** Office or Distributor.

Related Documentation

For additional information refer to:

Product Safety Information Manual 04585006.
 Product Information Manuals 80167356, 80167364.
 Product Maintenance Information Manual 16575284.

Manuals can be downloaded from www.irttools.com.

www.irttools.com

© 2006 Ingersoll-Rand Company

