



16574006
Edition 1
May 2006

AC and AG Grinder

Parts Information

PRO ▶
TECH

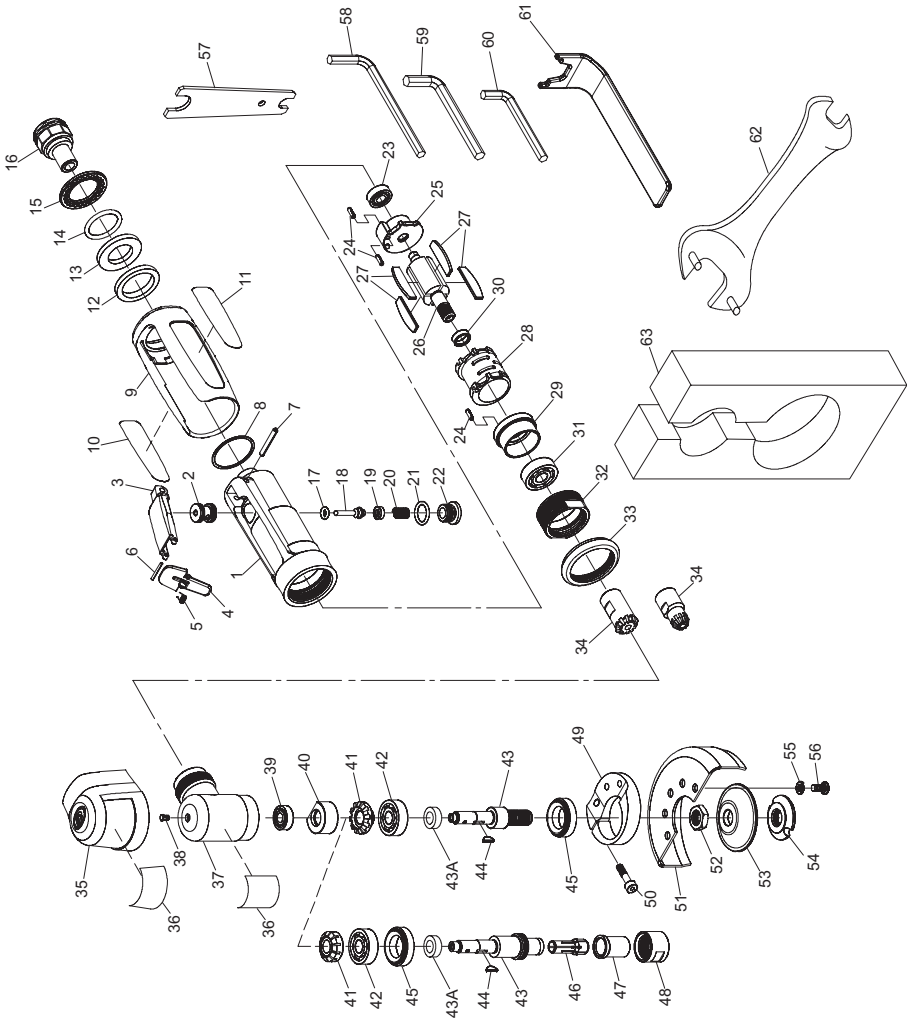
Professional Technologies Sweden AB
Munkerödsvägen 3
444 32 STENUNGSUND
Tel 0303-89 135 - www.protech.nu



Save These Instructions

 **Ingersoll Rand**

AC and AG Grinder Exploded Diagram



(Dwg.TP1994)

AC and AG Grinder Parts List

Item	Part Description	Part Number	Item	Part Description	Part Number
---	Housing Assembly (312 and 320 Series)	22041388	32	Motor Clamp	22037451
33			Housing Cap	22037535	
---	Housing Assembly (314 Series)	22041396	34	Pinion (312 and 314 Series)	22037469
* 1	Motor Housing	---		Pinion (320 Series)	22037550
* 2	Valve Bushing	---	35	Angle Head Cap Assembly	22041644
---	Throttle Lever Assembly	22041412	36	Warning Label	WL2-BTF
* 3	Throttle Lever	---	37	Angle Housing Assembly	22041651
* 4	Throttle Lever Latch	---	36	Warning Label	WL2-BTF
* 5	Latch Spring	---	38	Grease Fitting	D0F9-879
* 6	Latch Pin	---	39	Upper Arbor Bearing	22037279
7	Throttle Lever Pin	80096456	40	GreaseWick	22037501
* 8	Gasket, O-Ring	22041404	41	Gear (312 and 314 Series)	22037477
9	Composite Housing Assembly	22037154		Gear (320 Series)	22037568
10	Warning Label	WL1-BTF	42	Lower Arbor Bearing	107-97
11	Nameplate (312AG3)	312AG3-301	43	Arbor, 3/8" -24 THD	80114424
	Nameplate (312AC4)	312AC4-301		Arbor, 1/4" Collet	80114416
	Nameplate (314AG3)	314AG3-301	43A	Spacer	80114408
	Nameplate (314AC4)	314AC4-301	44	Key	22037642
	Nameplate (320AG3)	320AG3-301	45	Arbor Bearing Cap	22037527
	Nameplate (320AC4)	320AC4-301	46	1/4" Collet (AC Series)	22037352
* 12	Muffler Element	22041370	47	Collet Cap (AC Series)	22037378
* 13	Silencer	22037220	48	Collet Nut (AC Series)	22037360
* 14	O-Ring	22037238	49	Guard Adaptor (AG Series)	22037659
15	Exhaust Deflector	22037217	50	Cap Screw (AG Series)	22037667
16	Inlet Bushing	22037204	51	Wheel Guard (AG Series)	AG20-106-3
* 17	Valve O-Ring	107-314	52	Flange Spacer (AG Series)	22037717
18	Valve Stem	22037246	53	Wheel Flange (AG Series)	22037709
19	Valve Spring Seat	107-710	54	Wheel Nut (AG Series)	22037725
20	Valve Spring	22037253	55	Lockwasher, Guard Mounting (AG Series)	22037691
* 21	Valve Plug O-Ring	308-251			
22	Valve Plug	103-266	56	Screw, Guard Mounting (AG Series)	22037683
* 23	Rear Rotor Bearing	22037279	57	Wrench (AC Series)	302-69
24	Cylinder Dowel	308-98	58	Hex Key (5 mm) (AG Series)	22037733
25	Rear End Plate	22037261	59	Hex Key (3 mm) (AG Series)	22037758
26	Rotor	22037295	60	Hex Key (2.5 mm) (AG Series)	22037766
* 27	Vane Packet (set of 4 vanes)	22041636	61	Spanner Wrench (AG Series)	22041271
28	Cylinder	22037287	62	Wrench	22041263
29	Front End Plate	22037444	63	Tool Holder	22040992
30	Front Rotor Bearing Spacer	22037329	+	Piped Away Exhaust Kit	LG1-K284
* 31	Front Rotor Bearing	107-97			

+ Not Illustrated.

• To keep downtime to a minimum, it is desirable to have on hand certain repair parts. We recommend that you stock one (pair or set) of each part indicated by a bullet (•) for every four tools in service.

* Not a least replaceable unit. Only available as part of next higher assembly.

Parts and Maintenance

When the life of the tool has expired, it is recommended that the tool be disassembled, degreased and parts be separated by material so that they can be recycled.

Tool repair and maintenance should only be carried out by an authorized Service Center.

Refer all communications to the nearest **Ingersoll Rand** Office or Distributor.

Related Documentation

For additional information refer to:

Product Safety Information Manual 04584959.

Product Safety Information Manual 04580288.

Product Information Manual 80152853.

Product Information Manual 80152846.

Maintenance Information Manual 16575052.

Manuals can be downloaded from www.irttools.com.

Notes

Notes

www.irtools.com

© 2006 Ingersoll Rand Company

