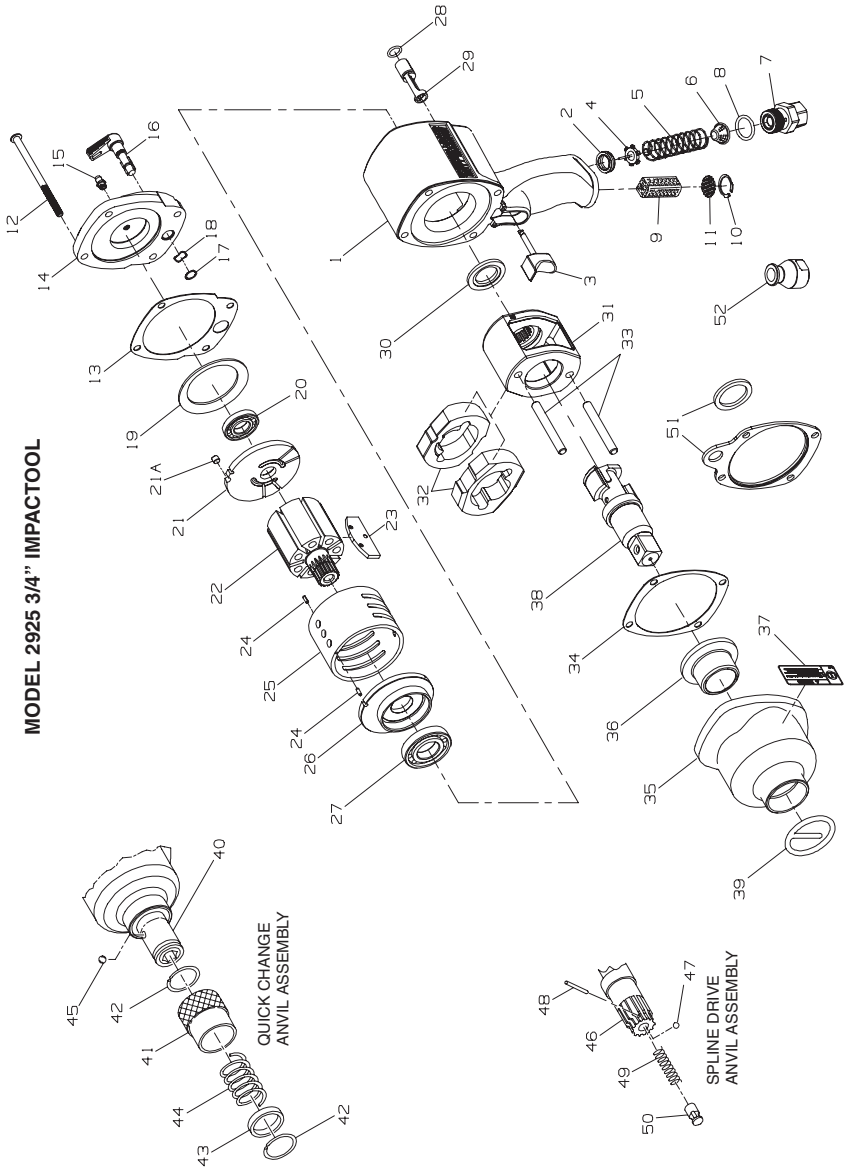


2925 and 2925RB Air Impact Wrench Exploded Diagram



(Dwg. TPA1580-1)

**PRO  
TECH**

Professional Technologies Sweden AB  
 Munkeödsvägen 3  
 444 32 STENUNGSUND  
 Tel 0303-89 135 - [www.protech.nu](http://www.protech.nu)



Form 04584496  
 Edition 1  
 November 2004

## 2925 and 2925RB Air Impact Wrench Parts List

Item	Part Description	Part Number	Item	Part Description	Part Number
	Motor Housing Assembly	2925-A40	30	Hammer Frame Washer	2161-706
1	Motor Housing	2925-B40	31	Hammer Frame	2925-703
2	Throttle Valve Seat	DG230-303	32	Hammer (2)	2925-724
3	Trigger Assembly	2161-A93	33	Hammer Pin (2)	2910-704
4	Throttle Valve	2921-302	* 34	Hammer Case Gasket	2161-36
5	Throttle Valve Spring	2161-51	35	Hammer Case Assembly	
6	Air Strainer Screen	834-61		for 2925 and 2925RB	2161-A727
7	Inlet Bushing Assembly	2161-A465A	36	Hammer Case Bushing	2161-641
8	Inlet Bushing O-Ring	AF120-290	37	Warning Label	
9	Muffler Element	202-311		for 2925 and 2925RB	WARNING-2-99
10	Retaining Ring	2161-118	38	Anvil	
11	Exhaust Deflector	2161-23		3/4" square drive	2910-726
12	Backcap Bolt (4)	2925-638		1" square drive	2910-826
* 13	Backcap Gasket	2161-739	39	Socket Retainer	
	Backcap Assembly	2925-A102		for 3/4" square drive	RR10034S
14	Backcap	2925-102		for 1" square drive	RR10015S
15	Grease Fitting	R1-188		Quick-Change Anvil Assembly	2910B-A926-10
16	Reverse Lever	2925-658	40	Quick Change Anvil	2910-926-10
17	Reverse Lever Snap Ring	2161-28	41	Retaining Sleeve	W54-930-10
18	Reverse Lever Spring	2161-278	42	Thrust Ring Lock (2)	W54-933-10
19	Motor Clamp Washer	2161-207	43	Thrust Ring	W54-932-10
20	Rear Rotor Bearing	4E-510	44	Retaining Sleeve Spring	W54-931-10
21	Rear End Plate	2925-12	45	Retaining Ball	8U-722
21A	Locating Pin	2920-74	46	No. 4 Spline Drive Anvil	2910-A526
22	Rotor	2925-53	47	Socket Retaining Ball	G601-65
* 23	Vane Packet (set of 7 Vanes)	2925-42-7	48	Retaining Ball Plunger	910-230
24	Cylinder Dowel (2)	JC3350-538	49	Ball Plunger Spring	12SR-262
25	Cylinder		50	Plunger Retaining Pin	502B-120
	for 2925P1 and 2925P3	2925-3	51	Hanger Kit	2161-366
	for 2925RBP1 and 2925RBP3	2925RB-3	52	Piped-Away Exhaust (accepts 1/2"-14 NPT male-fitting)	2161-123
26	Front End Plate	2925-11			
27	Front Rotor Bearing	834-24			
* 28	Reverse Valve O-Ring	023446		Grease	
29	Reverse Valve	2161-329		1 lb.	170-1LB
				8 lb.	170-8LB

\* Not illustrated.

• To keep downtime to a minimum, it is desirable to have on hand certain repair parts. We recommend that you stock one (pair or set) of each part indicated by a bullet (•) for every four tools in service.

## Parts and Maintenance

When the life of the tool has expired, it is recommended that the tool be disassembled, degreased and parts be separated by material so that they can be recycled.

Tool repair and maintenance should only be carried out by an authorized Service Center. Refer all communications to the nearest **Ingersoll-Rand** Office or Distributor.

## Related Documentation

For additional information refer to:  
 Air Impact Wrench Product Safety Information Manual Form 04580916,  
 Air Impact Wrench Product Information Manual Form 04584843,  
 Air Impact Wrench Maintenance Information Manual Form 04584330.

Manuals can be downloaded from [www.irtools.com](http://www.irtools.com).



[www.irtools.com](http://www.irtools.com)

© 2004 Ingersoll-Rand Company

Form 04584496

Edition 1

November 2004