



Form 04584389

Edition 1

October 2004

# Air Impact Wrench 2908P Series

---

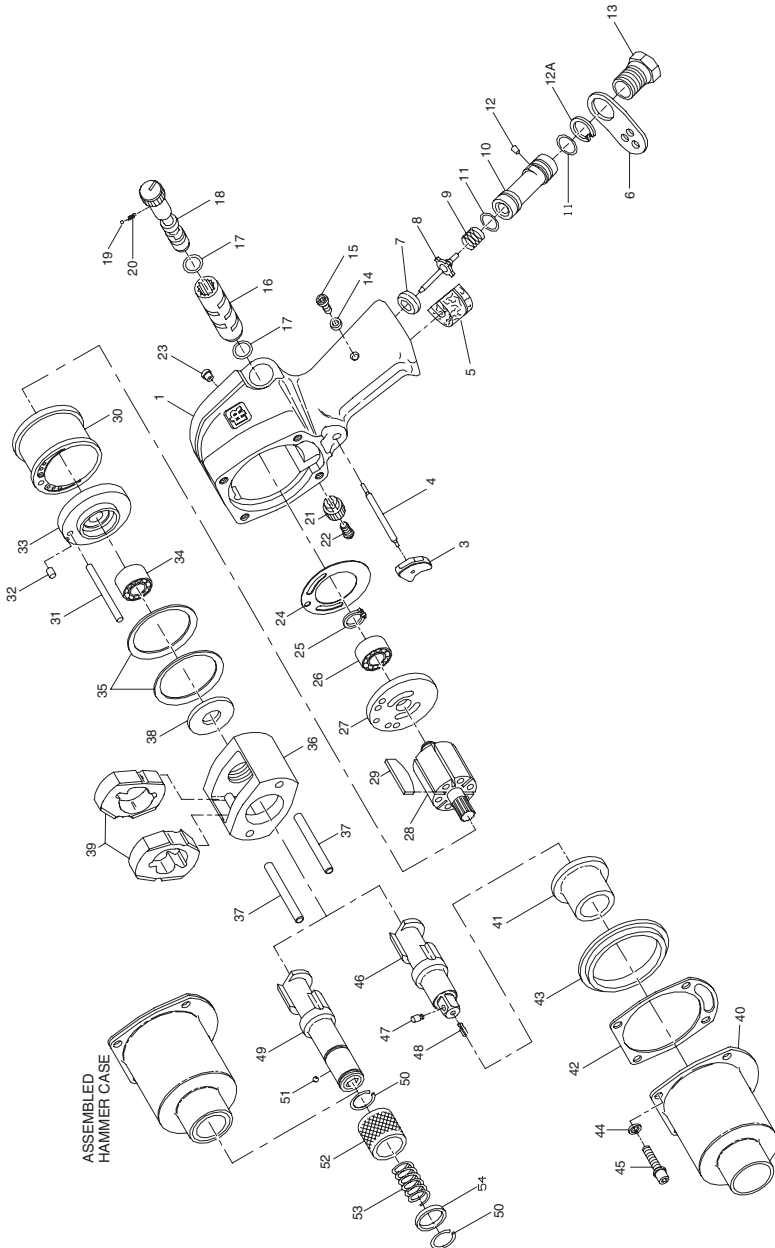
## Parts Information



**Save These Instructions**

***IR*** Ingersoll-Rand®

# 2908P Series Air Impact Wrench Exploded Diagram



(Dwg. TPA811-3)

## 2908P Series Air Impact Wrench Parts List

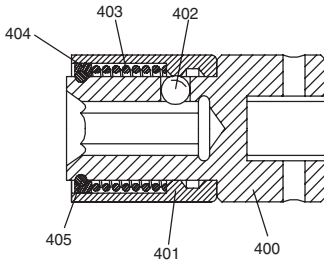
Item	Part Description	Part Number	Item	Part Description	Part Number	
1	Motor Housing Assembly	2908-A40	38	Rear Hammer Frame Washer	2908-706	
	Trigger Assembly	7AH-A93	39	Hammer (2)	2908-724	
3	Trigger	5RA-93	40	Hammer Case Assembly for 2908P1 and 2908P2 for 2908P1-EU and 2908P2-EU	2908-A727 2908-EU-727	
4	Trigger Pin	7AH-94				
†	Exhaust Silencer	2908-311	*	Hammer Case Label for 2908P1 and 2908P2 for 2908P1-EU and 2908P2-EU	WARNING-2-99 EU-99	
6	Exhaust Deflector	2908-23				
†	Throttle Valve Seat	2908-303				
8	Throttle Valve	2908-302A				
†	Throttle Valve Spring	2908-51	41	Hammer Case Bushing	2908-641	
10	Oiler Body Assembly	2908-A198	†*	42	Hammer Case Gasket	1709-36
•	Oiler Body Seal (2)	AF120-290	43	Hammer Case Pilot	2908-800	
	Oiler Plug	77H-75	44	Hammer Case Lock Washer (4)	8U-58	
12A	Oiler Retaining Ring	2908-304	45	Hammer Case Cap Screw (4)	R0H-354	
13	Air Strainer Assembly	804-465	46	Anvil Assembly for 5/8" square drive for 3/4" square drive	2908-P726 2908-P826	
†*	Oil Chamber Plug Seal	R3-92A				
15	Oil Chamber Plug	D92-227	•	47	Socket Retaining Pin for 5/8" square drive for 3/4" square drive	
16	Reverse Valve Bushing Assembly	2908-A330				
†	Reverse Valve Bushing Seal (2)	AF120-290				
18	Reverse Valve	2908-329				
†	Reverse Valve Detent Ball	AV1-255	48	Socket Retaining Pin Spring	5UHD-718	
†	Reverse Valve Detent Spring	231-664		Quick-Change Anvil Assembly (5/8" hex recess)	2908-A926-10	
21	Reverse Valve Knob	231-666				
22	Reverse Valve Knob Screw	231-665	49	Quick Change Anvil	2908-926-10	
23	Grease Fitting	130SR-188	50	Thrust Ring Lock (2)	908-933-10	
†*	End Plate Gasket	2908-283	51	Retaining Ball (7/32" diameter)	2U-722	
†	Rear Rotor Bearing Retainer	R4800-119	52	Retaining Sleeve	908-930-10	
†	Rear Rotor Bearing	R1A-510	53	Retaining Sleeve Spring	908-931-10	
†	Rear End Plate	2908-12	54	Thrust Ring	908-932-10	
28	Rotor	2908-53	*	Nameplate for 2908P1 and 2908P2 for 2908P1-EU and 2908P2-EU	2908-301 2908-EU-301	
†*	Vane Packet (set of 6 Vanes)	2908-42-6				
30	Cylinder	908-3	*	Vertical Hanger	2908-365	
31	Cylinder Dowel	403-98A				
32	Front End Plate Dowel	230-74	*	Grease Gun	R000A2-228	
33	Front End Plate	2908-11	*	Tune-up Kit (includes illustrated parts 5, 7, 9, 14, 17 [2], 19, 20, 24, 25, 26, 27, 29 34 and 42)	2908P-TK2	
†*	Front Rotor Bearing	R38P-606				
35	Motor Clamp Washer (2)	2908-207				
36	Hammer Frame Assembly	2908-A703				
37	Hammer Pin (2)	2908-704				

\* Not illustrated.

† Indicates Tune-up Kit part.

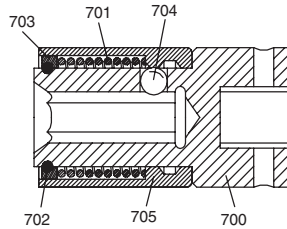
• To keep downtime to a minimum, it is desirable to have on hand certain repair parts. We recommend that you stock one (pair or set) of each part indicated by a bullet (•) for every four tools in service.

**QUICK-CHANGE CHUCK**  
(For Use on 5/8" square drive Anvil.)



(Dwg. TPD13)

**QUICK-CHANGE CHUCK**  
(For Use on 3/4" square drive Anvil.  
Accommodates 5/8" hexagon shank Socket Drivers.)



(Dwg. TPD543)

Item	Part Description	7/16" Hex. Recess	5/8" Hex. Recess
	Quick-Change Chuck Assembly	8U-A925-7	508-A925A-10
400	Quick-Change Chuck Body	8U-925-7	508-925A-10
401	Retaining Sleeve	4U-930-7	W54-930-10
402	Retaining Ball	2U-722	8U-722
403	Retaining Sleeve Spring	4U-931-7	W54-931-10
404	Thrust Ring	4U-932-7	W54-932-10
405	Thrust Ring Lock	4U-933-7	W54-933-10

Item	Part Description	5/8" Hex. Recess
	Quick-Change Chuck Assembly	510-A925-10
700	Quick-Change Chuck Body	510-925-10
701	Retaining Sleeve Spring	W54-931-10
702	Thrust Ring Lock	W54-933-10
703	Thrust Ring	W54-932-10
704	Retaining Ball (9/32" diameter steel ball)	8U-722
705	Retaining Sleeve	W54-930-10

## Parts and Maintenance

When the life of the tool has expired, it is recommended that the tool be disassembled, degreased and parts be separated by material so that they can be recycled.

Tool repair and maintenance should only be carried out by an authorized Service Center. Refer all communications to the nearest **Ingersoll-Rand** Office or Distributor.

## Related Documentation

For additional information refer to:  
Air Impact Wrench Product Safety Information Manual Form 04580916,  
Air Impact Wrench Product Safety Information Manual Form 04584785,  
Air Impact Wrench Maintenance Information Manual Form 04584256.

Manuals can be downloaded from [www.irtools.com](http://www.irtools.com).



[www.irtools.com](http://www.irtools.com)

© 2004 Ingersoll-Rand Company