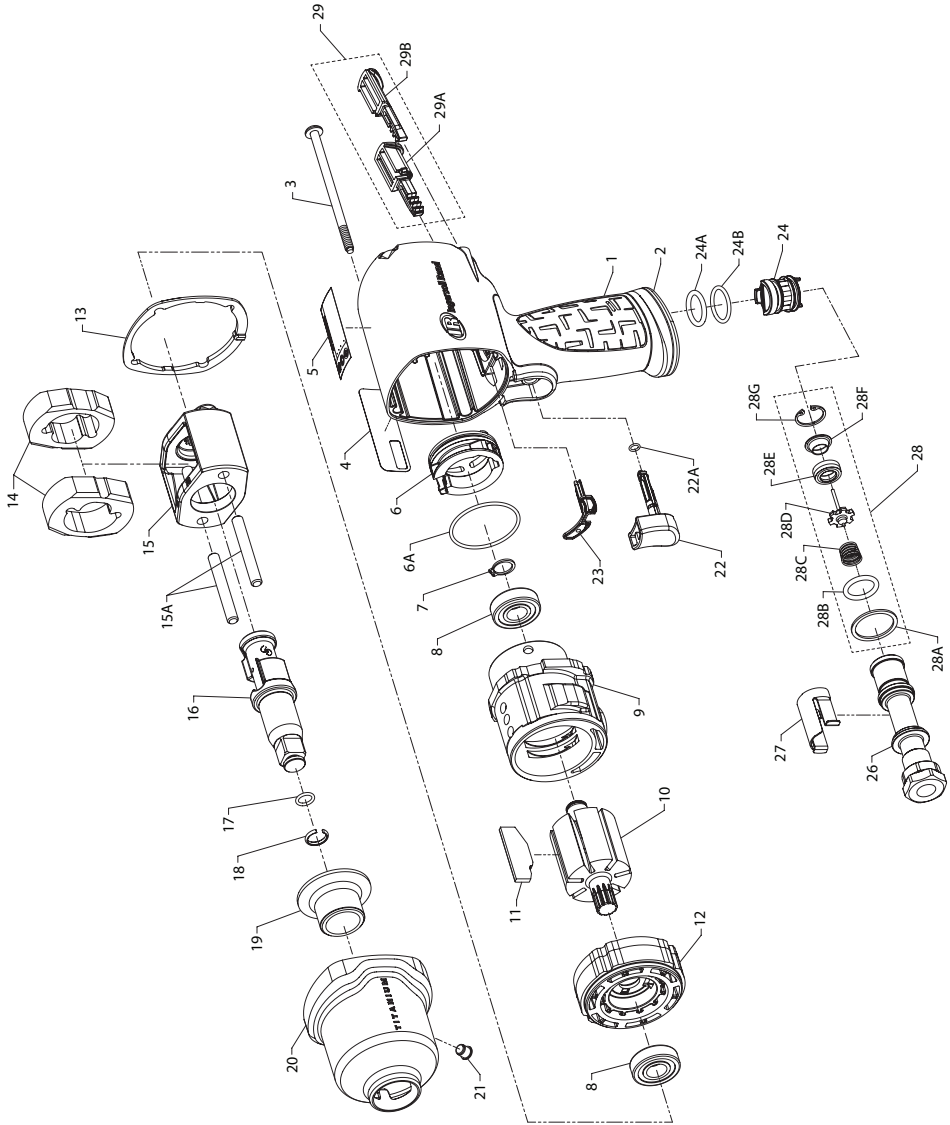


2135TiMAX Series Air Impacttool™ Exploded Diagram



(Dwg. 45536026)

2135TiMAX Series Air Impactool™ Parts List

Item	Part Description	Part Number	Item	Part Description	Part Number
*	Housing Assy (2135TiMAX)	2135TiMAX-A40	† 18	Socket Retainer (2135TiMAX and 2135QTiMAX)	2135-425
	Housing Assy (2135Ti-2MAX)	2135Ti-2MAX-A40		Socket Retainer (2135PTiMAX and 2135QPTiMAX)	804-716
	Housing Assy (2135QTiMAX)	2135QTiMAX-A40	19	Bushing, Hammer Case	2135-941
	Housing Assy (2135QTi-2MAX)	2135QTi-2MAX-A40	*	Hammer Case Assy	2135-D727A
	Housing Assy (2135PTiMAX)	2135PTiMAX-A40	19	Bushing, Hammer Case	---
	Housing Assy (2135QPTiMAX)	2135QPTiMAX-A40	20	Hammer Case	---
1	Housing	---	21	Grease Fitting	---
2	Exhaust Deflector	---	21	Grease Fitting	130SR-188
4	Information Label	---	† *	Trigger Assy	2135-D93B
5	Warning Label	---	22	Trigger	---
23	Gasket	---	22A	O-Ring, Trigger	---
24	Reverse Valve Assy	---	† 23	Gasket	2131-283
29	Button Kit	---	*	Reverse Valve Assy	2131-A329
3	Screw, Hammer Case (4 required)	2135-638	24	Reverse Valve Assy	---
4	Information Label (2135TiMAX)	2135TiMAX-300	24A	O-Ring, Reverse Valve (top)	---
	Information Label (2135Ti-2MAX)	2135Ti-2MAX-300	24B	O-Ring, Reverse Valve (bottom)	---
	Information Label (2135QTiMAX)	2135QTiMAX-300	26	Inlet Bushing Assy (includes 27, 28)	2135-D565A
	Information Label (2135QTi-2MAX)	2135QTi-2MAX-300	27	Inlet Clip	2131-57
	Information Label (2135PTiMAX)	2135PTiMAX-300	28	Inlet Parts Kit	2135-K303
	Information Label (2135QPTiMAX)	2135QPTiMAX-300	28A	Washer	---
5	Warning Label	WARNING-2-99	28B	O-Ring, Seal	---
*	Power Regulator Assy	2135-D249A	28C	Throttle Spring	---
6	Power Regulator	---	28D	Throttle Valve	---
6A	O-Ring, Power Regulator	---	28E	Valve Seat	---
7	Retaining Ring	2131-6	28F	Seat Support	---
8	Ball Bearing (2 required)	2131-97	28G	Retainer	---
9	Cylinder	2135-3	29	Button Kit	2135-K75
10	Rotor	2135-53	29A	Forward Button	---
† 11	Vane Pack (set of 7)	2135-42A-7	29B	Reverse Button	---
12	End Plate	2131-11	*	Tune-Up Kit	2135-TK2
† 13	Hammer Case Gasket	2135-36	6A	O-Ring, Power Regulator	---
*	Hammer Kit (2135TiMAX and 2135QTiMAX)	2135-THK1	7	Retaining Ring	---
*	Hammer Kit (2135Ti-2MAX and 2135QTi-2MAX)	2135-2-THK1	8	Ball Bearing (2)	---
	Hammer Kit (2135PTiMAX and 2135QPTiMAX)	2135PTi-THK1	11	Vane Pack (set of 7)	---
13	Hammer Case Gasket	---	13	Hammer Case Gasket	---
14	Hammer (2)	---	17	O-Ring	---
15A	Hammer Pin (2)	---	18	Retaining Clip	---
16	Anvil Assy	---	22A	O-Ring, Trigger	---
*	Kit Grease	---	23	Gasket	---
*	Hammer Frame Assy Kit	2135-K703	24A	O-Ring, Reverse Valve (top)	---
15	Hammer Frame	---	24B	O-Ring, Reverse Valve (bottom)	---
15A	Hammer Pin (2)	---	28	Inlet Parts Kit	---
*	Kit Grease	---	*	Inlet Clip Removal Tool	2131-322
*	Anvil Assy (2135TiMAX and 2135QTiMAX)	231B-A626	† *	Air Care Kit (grease gun, grease, oil)	115-LBK1
*	Anvil Assy (2135Ti-2MAX and 2135QTi-2MAX)	231B-A414	*	Grease (replacement tube for -LBK1)	115-4T
*	Anvil Assy (2135PTiMAX and 2135QPTiMAX)	231B-A726	*	Air Tool Oil (4 oz. Bottle)	1024
16	Anvil	---	*	Grease (1 lb can)	105-1LB
17	O-Ring or Socket Retainer Spring	---	*	Grease (8 lb can)	105-8LB
18	Socket Retainer	---	*	Grease Gun	R000A2-228
† 17	O-Ring, Anvil (2135TiMAX and 2135QTiMAX)	R1A-159			
	Socket Retainer Spring (2135PTiMAX and 2135QPTiMAX)	SUHD-718			

* Not illustrated.

† To keep downtime to a minimum, it is desirable to have certain repair parts on hand. We recommend that you stock one (pair or set) of each part indicated by a (†) for every four tools in service.

Parts and Maintenance

When the life of the tool has expired, it is recommended that the tool be disassembled, degreased and parts be separated by material so that they can be recycled.

Tool repair and maintenance should only be carried out by an authorized Service Center.

Refer all communications to the nearest **Ingersoll Rand** Office or Distributor.

Related Documentation

For additional information refer to:

Air Impact Wrench Product Safety Information Manual 04580916.

Air Impact Wrench Product Information Manual 45534062.

Manuals can be downloaded from www.irtools.com.



www.irtools.com

© 2007 **Ingersoll Rand** Company

45534070

Edition 2

July 2007