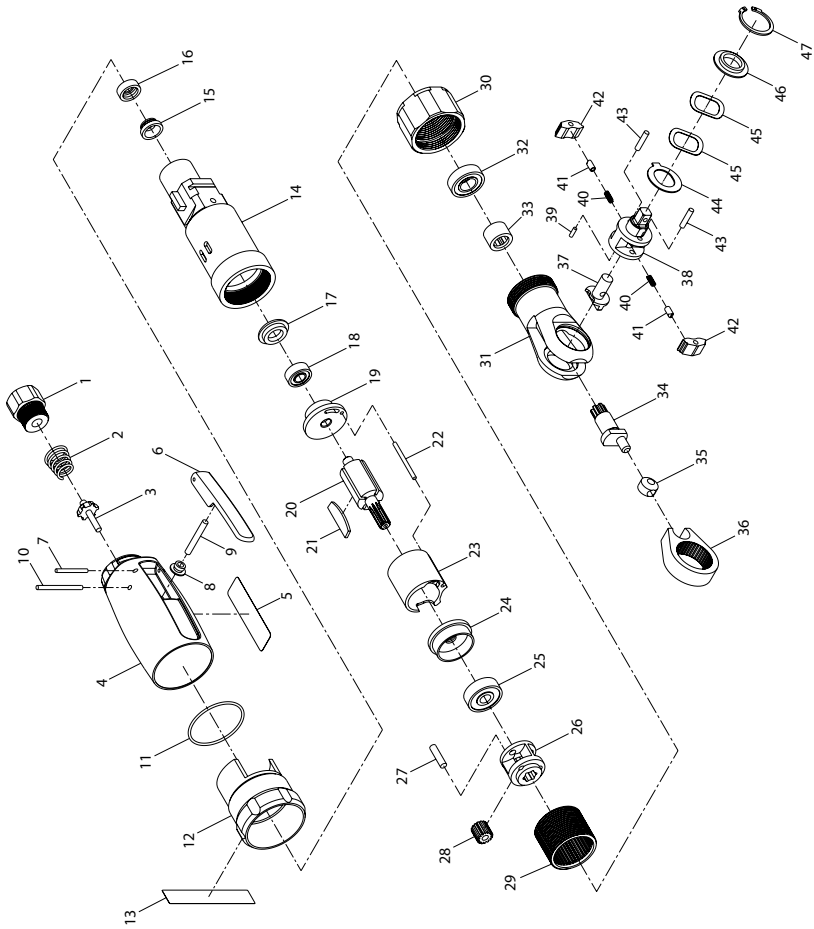


1103 and 1133 Air Ratchet Wrench Exploded Diagram



(Dwg. TP1959_4)

**PRO
TECH**

Professional Technologies Sweden AB
Munkerödsvägen 3
444 32 STENUNGSUND
Tel 0303-89 135 - www.protech.nu

IR Ingersoll Rand



80156524
Edition 2
April 2008

1103 and 1133 Air Ratchet Wrench Parts List

Item	Part Description	Part Number	Item	Part Description	Part Number
1	Inlet Bushing Assembly	1103-565	28	Planet Gear (3)	1103-9
2	Throttle Valve Spring	1103-338	29	Internal Gear	1103-406
3	Throttle Valve	344-302	30	Coupling Nut	1103-27
	Composite Housing Assembly			Ratchet Housing Assembly	1103-A322
	for 1103	1103-A300	31	Ratchet Housing	--
	for 1133	1133-A300	32	Crankshaft Ball Bearing	1103-510
4	Composite Housing	--	33	Crankshaft Needle Bearing	1103-32
5	Nameplate		34	Crankshaft	1103-35
	for 1103	1103-301A	35	Drive Bushing	104-36
	for 1133	1133-301A	36	Yoke	1103-37
6	Trigger Lever	1103-93	37	Reverse Button	1103-38
7	Trigger Lever Pin	1103-553	38	Anvil Assembly	
8	Trigger Pin Seal	1103-308		for 1103	1103-44
9	Trigger Plunger	1103-302		for 1133	1133-44
10	Composite Housing Retaining Pin	1103-554	39	Reverse Button Stop Pin	104-39
11	O-ring	1103-367	40	Lock Spring and Damper (2)	1103-A41
	Regulator Assembly	1103-A249	41	Lock Pin (2)	1103-49
12	Regulator	--	42	Pawl (2)	1103-43
13	Warning Label	1107-99	43	Pawl Retaining Pin (2)	1103-178
	Housing Assembly	1103-A40	44	Spacer	1103-47
14	Housing	--	45	Friction Washer (2)	1103-45
15	Valve Seat Base	1103-710	46	Thrust Washer	1103-46
16	Valve Seat	1103-303	47	Retaining Ring	1033-426
17	End Cap	1103-624		Ratchet Head Kit (includes items 37 through 47)	
18	Rear Rotor Bearing	1103-24		for 1103	1103-TRK1
19	Rear End Plate	1103-12		for 1133	1133-TRK1
20	Rotor	1103-53		Oil - Ingersoll Rand No. 10 (4 oz. bottle)	10Z4
21	Vanes (set of 4)	1103-42-4		Grease	
22	Cylinder Pin	1103-98		Ingersoll Rand No. 28 (1 lb can)	28 1 LB
23	Cylinder	1103-3		Ingersoll Rand No. 28 (8 lb can)	28 8 LB
24	Front End Plate	1103-11		Ingersoll Rand No. 66 (1 lb can)	66 1 LB
25	Front Rotor Bearing	1103-97		Ingersoll Rand No. 66 (8 lb can)	66 8 LB
26	Spindle	1103-8		Spline Wrench (for removal of item 29)	1103-SW
27	Planet Gear Shaft (3)	109-524			

Parts and Maintenance

When the life of the tool has expired, it is recommended that the tool be disassembled, degreased and parts be separated by material so that they can be recycled.

Tool repair and maintenance should only be carried out by an authorized Service Center.

Refer all communications to the nearest **Ingersoll Rand** Office or Distributor.

Related Documentation

For additional information refer to:

Air Ratchet Wrench Product Safety Information Manual 04580361.

Air Ratchet Wrench Product Information Manual 04585022.

Manuals can be downloaded from www.irtools.com.

