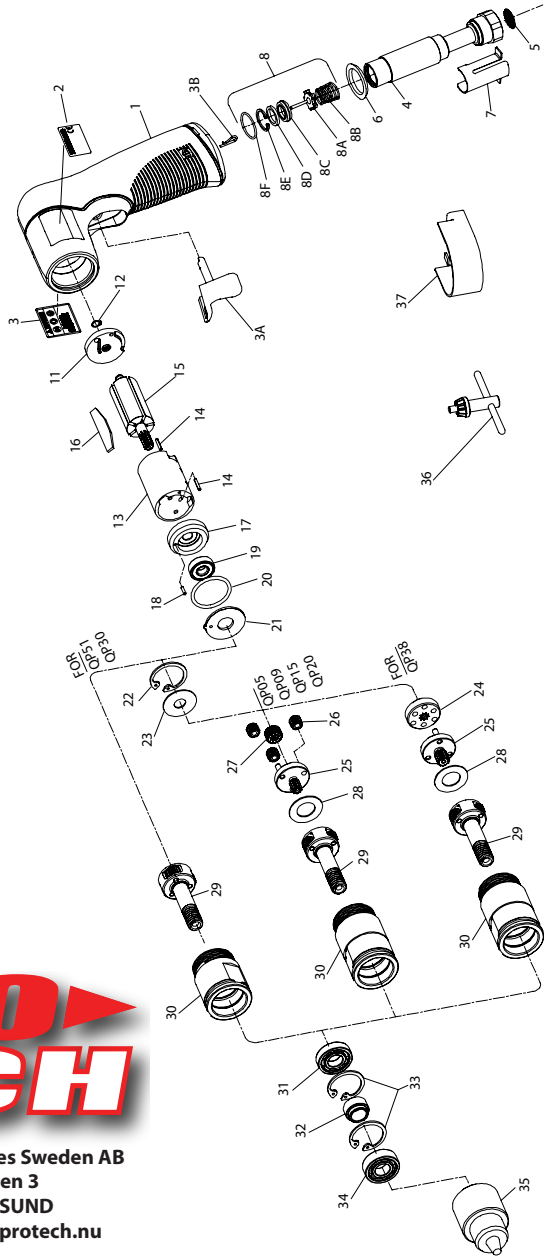


QP Series Air Drill Exploded Diagram



**PRO
TECH**

Professional Technologies Sweden AB
 Munkerödsvägen 3
 444 32 STENUNGSUND
 Tel 0303-89 135 - www.protech.nu

(Dwg. TPA1738-1)



16572745
 Edition 3
 June 2009

QP Series Air Drill Parts List

Item	Part Description	Part Number	Item	Part Description	Part Number
1	Motor Housing		25	Planet Gear Head Assembly (includes gear shafts)	
†	for Models with memory chip	TRD-A40A		for Series QP05 and QP09	TRH-A2169-16
	for Models without memory chip	TRD-A40A-NC		for Series QP15	TRH-A2169-12
2	Nameplate	TRH-301		for Series QP20	TRH-A2169-10
3	Warning Label	TRH-99		for Series QP38	TRH-A216-12
3A	Trigger Assembly	TRD-A93	26	Planet Gear (3 for each Gear Head)	
3B	Trigger Retainer	TRD-18		for Series QP05 and QP09	TRH-10-16
4	Inlet Bushing Assembly			for Series QP15	TRH-10-12
	for 1/4-18 NPT thread	TRD-A465		for Series QP20	TRH-10-10
	for 1/4-19 BSPT thread	TRD-A465-B	27	Gear Head Pinion	
5	Inlet Bushing Screen	TRH-61		for Series QP15	TRH-17-18
6	Inlet Bushing Bezel	TRD-123		for Series QP20	TRH-17-21
7	Inlet Bushing Retainer	TRD-57	28	Planet Gear Head Spacer (for Series QP05, QP09, QP15, QP20 and QP38)	TRH-82
8	Inlet Parts Kit	TRD-K303			
8A	Throttle Valve	---		29	Spindle Assembly (includes all spindle gearing)
8B	Throttle Valve Spring	---	for Series QP05 and QP30		TRD-A8-16
8C	Throttle Valve Seat	---	for Series QP09, QP15 and QP51		TRD-A8-12
8D	Valve Seat Support	---	for Series QP20		TRD-A8-10
8E	Valve Seat Retainer	---	for Series QP38		TRD-A8-15
8F	Inlet Bushing Seal	---	30		Gear Case
11	Rear End Plate Assembly (includes rear rotor bearing)	TRD-A12		for Series QP30 and QP51	TRD-37-5
				for all others	TRD-37
12	Rear End Plate Assembly Retainer	8SL-305	31	Spindle Bearing	R00H-97
13	Cylinder Assembly	TRD-A3	32	Bearing Spacer	TRD-111
14	Cylinder Alignment Pin (2)	TRH-98-1	33	Bearing Stop (2)	TRH-28
15	Rotor	TRD-53	34	Spindle Cap Bearing	TRH-510
16	Vane Packet (Set of 5 Vanes)	TRH-42-5	35	Drill Chuck	
17	Front End Plate Assembly	TRH-A11		for Models ending in 1 or 1D (1/4")	R0H-99
18	End Plate Alignment Pin	TRH-98-2		for Models ending in 2 or 2D (3/8")	6A-99
19	Front Rotor Bearing	TRH-24	36	Chuck Key	
20	Motor Seal	TRH-211		for R0H-99 (1/4") Chuck	R1H-J253
21	Motor Clamp Washer	TRH-207		for 6A-99 (3/8") Chuck	ROJ-J253
22	Gear Retainer (for Series QP05, QP09, QP15, QP20 and QP38)	TRH-28	*	Drill Chuck Guard Kit (optional)	
				for Models ending in 1 or 1D (1/4")	TRD-A961-S
				for Models ending in 1 or 1D (3/8")	TRD-A961-S
23	Gear Head Spacer (for Series QP05, QP09, QP15, QP20 and QP38)	TRH-81	37	Inlet Retainer Removal Tool	TRD-322
24	Planet Gear Head Drive Plate (for Series QP38)	TRH-17	*	Tune-Up Kit (Includes the following items; 3B, 5, 6, 8, 12, 16, 18, 19, 20, and 37)	Q2-PDRILL-TK1

† Memory chip is optional. Can be added by using Inlet Bushing, part number AMS-4NPT (NPT) or AMS-4BSPT (BSP), equipped with TouchSync.
* Not illustrated.

Parts and Maintenance

When the life of the tool has expired, it is recommended that the tool be disassembled, degreased and parts be separated by material so that they can be recycled.

Tool repair and maintenance should only be carried out by an authorized Service Center.

Refer all communications to the nearest **Ingersoll Rand** Office or Distributor.

Related Documentation

For additional information refer to:

Air Drill Product Safety Information Manual 04580353.

Air Drill Product Information Manual 16572034.

Air Drill Maintenance Information Manual 16572679.

Manuals can be downloaded from www.irtools.com.



www.irtools.com
© 2009 Ingersoll Rand Company

16572745
Edition 3
June 2009