



16573271
Edition 1
January 2006

Air Grinder

77H Series

Parts Information

PRO
TECH

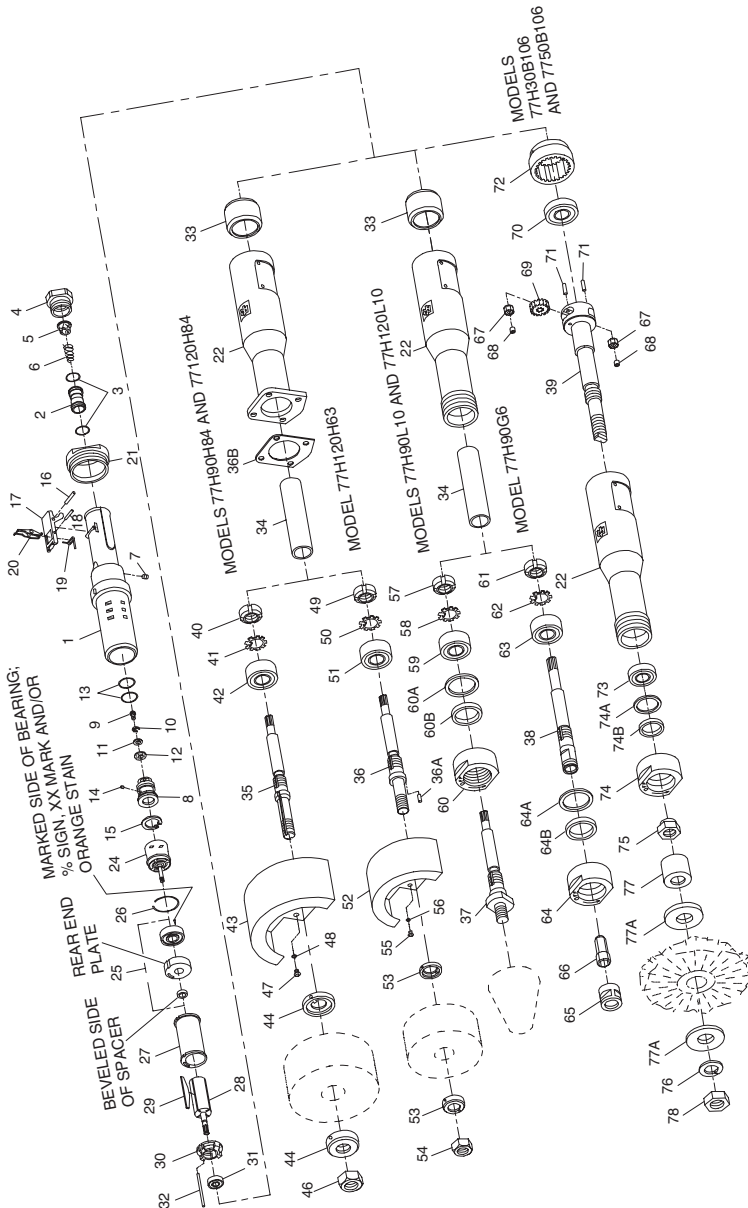
Professional Technologies Sweden AB
Munkerödsvägen 3
444 32 STENUNGSUND
Tel 0303-89 135 - www.protech.nu



Save These Instructions

 **Ingersoll Rand**[®]

77H Series Air Grinder Exploded Diagram



(Dwg. TPA1054-5)

77H Series Air Grinder Parts List

Item	Part Description	Part Number	Item	Part Description	Part Number
1	Throttle Handle Assembly	77H-A160	+ 24	Controller Assembly (consists of Controller and Rear End Plate Assembly)	
2	Throttle Valve Assembly	88V60-A302			
3	Seal (2)	C321-606		for 77H90G6, 77H90H84, 77H90L10 and 77H30B106	77H90-A524ARH
4	Inlet Bushing	77H-38			
5	Inlet Bushing Screen	834-61		for 77H120H84, 77H120H63 and 77H120L10	77H120-A524ARH
6	Throttle Valve Spring	77H-262			
7	Oil Chamber Plug	R2-227		for 77H50B106	77H150-A524ARH
8	Throttle Valve Seat Support Assembly	77H-A303	25	Rear End Plate Assembly (consists of rear end plate, rotor bearing and required spacers)	77H-A12
9	Valve Seat Screw	PS3-83			
10	Valve Seat Lock Washer	H54U-352	26	Rear End Plate Gasket	77H-739
11	Valve Seat Washer	99V60-155	27	Cylinder	77H-3
12	Valve Seat	R4-159A	+ 28	Rotor	
13	Valve Support Seal (2)	SPP101-743		for 77H30B106 and 77H50B106 (9 teeth)	77H30-53RH
14	Oiler Feeder Plug	77H-75		for all others (13 teeth)	77H-53ARH
15	Throttle Valve Seat Support Retainer	77H-518	29	Vane Packet (set of 4 Vanes)	77H-42-4
16	Throttle Lever Pin	MR-100	30	Front End Plate	77H-11
17	Throttle Lever Assembly	77H-A400	31	Front Rotor Bearing	77H-24
18	Lever Lock Pin	R100B-120	32	Cylinder Dowel	77H-98
19	Lever Lock Spring	DG120-405	33	Motor Spacer	77E-208-H8
20	Lever Lock	DG120-402	34	Arbor Coupling	77E-304A
21	Coupling Nut	77H-282	*	Controller Wrench	77H-950
# 22	Arbor Housing Assembly		*	Valve Seat Support Retaining Pliers	77H-154
	for 77H90H84, 77H120H84 and 77H120H63	77E-A40-H8	*	Coupling Nut Wrench	77H-281
	for 77H90H84-EU, 77H120H84-EU, and 77H120H63-EU	77E-EU-A40-H8	*	Vibra-Tite®** (0.6 cc) (2)	5R-VT06
	for 77H90L10, 77H120L10, 77H90G6, 77H30B106 and 77H150B106	77E-A40-G4	*	Adhesive Kit	77H-KVLT
	for 77H90L10-EU, 77H120L10-EU, 77H30B106-EU and 77H150B106-EU	77E-EU-A40-G4	*	Tune-up Kit (includes illustrated parts 3 [2], 5, 6, 12, 13 [2], 26 and 29)	77H/77A-TK3
				THE FOLLOWING PARTS ARE USED IN MODELS 77H90H84, 77H90H84-EU, 77H120H84 AND 77H120H84-EU TYPE 1 RADIAL WHEEL GRINDERS	
			35	Arbor (13 teeth)	77E-4A-H8
			36B	Dust Seal	77H-930
*	Grease Fitting	D0F9-879	40	Bearing Locknut	77H-824-H6
*	Nameplate Kit	77H-EU-K301	41	Bearing Lock Washer	77H-66-H6
*	Nameplate Screw (4) (for all models ending in -EU)	BN403-302	42	Wheel End Bearing	77H-33-H6
*	Warning Label (for all models ending in -EU)	EU-99	43	Wheel Guard (4" x 1")	77H-941
*	Nameplate Kit (for all other models)	77H-K301	44	Wheel Flange (2)	77H-16-H8
	Nameplate Screw (4)	BN403-302	46	Wheel Nut	215-182
	Warning Label		47	Wheel Guard Screw	
	for 77H30B106 and 77H50B106	WARNING-5-99		M6 x 1-6g 14 mm long (2)	77H-638
	for all other models not ending in -EU	WARNING-4-99	48	Wheel Guard Lock Washer (2) (for use with No. 77H-638)	88H60-67

* Not illustrated

For all models, whenever a new Arbor Housing is installed, select the correct Nameplate from the Nameplate Kit and attach it to the Housing with the Nameplate Screws.

+ Early Models of these Grinders had Rotors and Controller Assemblies with left-hand threads. If you have a model with a left-hand thread, contact **Ingersoll-Rand**

when ordering replacement parts.

** Registered trademark of ND Industries.

77H Series Air Grinder Parts List

Item	Part Description	Part Number	Item	Part Description	Part Number
	THE FOLLOWING PARTS ARE USED IN MODELS 77H120H63 AND 77H120H63-EU TYPE 1 RADIAL WHEEL GRINDERS		61	Bearing Locknut	77H-824-H6
			62	Bearing Lock Washer	77H-66-H6
			63	Wheel End Bearing	77H-33-H6
			64	Wheel Bearing Cap	77H-19A
36	Arbor (13 teeth)	77E-A4A-H6	64A	Cap Spring	77H-20
36A	Wheel Flange Pin	77H-84	64B	Dust Washer	66H-35
36B	Dust Seal	77H-930	65	Collet Nut	DG120-699A
49	Bearing Locknut	77H-824-H6	*	Collet Nut and Arbor Wrench (2) (3/4")	DG120-69
50	Bearing Lock Washer	77H-66-H6	66	Collet	
51	Wheel End Bearing	77H-33-H6		for 1/4" or 6 mm diameter shank accessory	G160HD-700-1/4
52	Wheel Guard (3" x 1/2")	77H-931		for 3/8" diameter shank accessory	DG120-700-G6
53	Wheel Flange (2)	77H-16-H6		THE FOLLOWING PARTS ARE USED IN MODELS 77H30B106, 77H30B106-EU, 77H50B106 AND 77H50B106-EU WIRE BRUSH MACHINES	
54	Wheel Nut	23-697			
55	Wheel Guard Screw				
	M6 x 1-6g 14 mm long (2)	77H-638			
	10-32 x 1/2" long (2)	FEA100-26			
56	Wheel Guard Screw Lock Washer (2) (for use with 77H-638)	88H60-67	39	Wire Brush Arbor	77E-4-B10
	THE FOLLOWING PARTS ARE USED IN MODELS 77H90L10, 77H90L10- EU, 77H120L10 AND 77H120L10-EU CONE WHEEL GRINDERS		67	Planet Gear Assembly (2)	77H-A10
			68	Planet Gear Bearing (one for each Gear)	G700-654
			69	Rotor Pinion (9 teeth)	77H-17
			70	Gear Frame Bearing	WFS182-97
37	Cone Wheel Arbor (13 teeth)		71	Planet Gear Shaft (2)	G700-191
	3/8"-24 thread	77H-4A-L6	72	Internal Gear	77H-406
	1/2"-13 thread	77H-4A-L8	73	Wheel End Bearing	77E-33-B10
	5/8"-11 thread	77E-4A-L10	74	Wheel Bearing Cap	77H-19A
57	Bearing Locknut	77H-824-H6	74A	Cap Spring	77H-20
58	Bearing Lock Washer	77H-66-H6	74B	Dust Washer	66H-35
59	Wheel End Bearing	77H-33-H6	75	Wheel End Bearing Nut	77E-91A
60	Wheel Bearing Cap	77H-19A	76	Wire Brush Lock Washer	A-67
60A	Cap Spring	77H-20	77	Wire Brush Spacer (Long)	77H50-775
60B	Dust Washer	66H-35	77A	Wire Brush Spacer (Short) (2)	R3F-286
*	Cone Wheel Arbor Wrench (1")	7RAQT4-254	78	Wire Brush Nut	HU-776
	THE FOLLOWING PARTS ARE USED IN MODEL 77H90G6 COLLET TYPE GRINDER		*	Wheel Bearing Nut Wrench (1")	7RAQT4-254
			*	Wire Brush Nut Wrench (15/16")	7S60-24818
38		Collet Arbor (13 teeth)	77E-4A-G4		

* Not illustrated.

Parts and Maintenance

When the life of the tool has expired, it is recommended that the tool be disassembled, degreased and parts be separated by material so that they can be recycled.

Tool repair and maintenance should only be carried out by an authorized Service Center. Refer all communications to the nearest **Ingersoll-Rand** Office or Distributor.

Related Documentation

For additional information refer to:
Product Safety Information Manual 04584959.
Product Information Manual 16576100.
Maintenance Information Manual 16573339.

Manuals can be downloaded from www.irttools.com.

www.irttools.com

© 2006 Ingersoll-Rand Company

