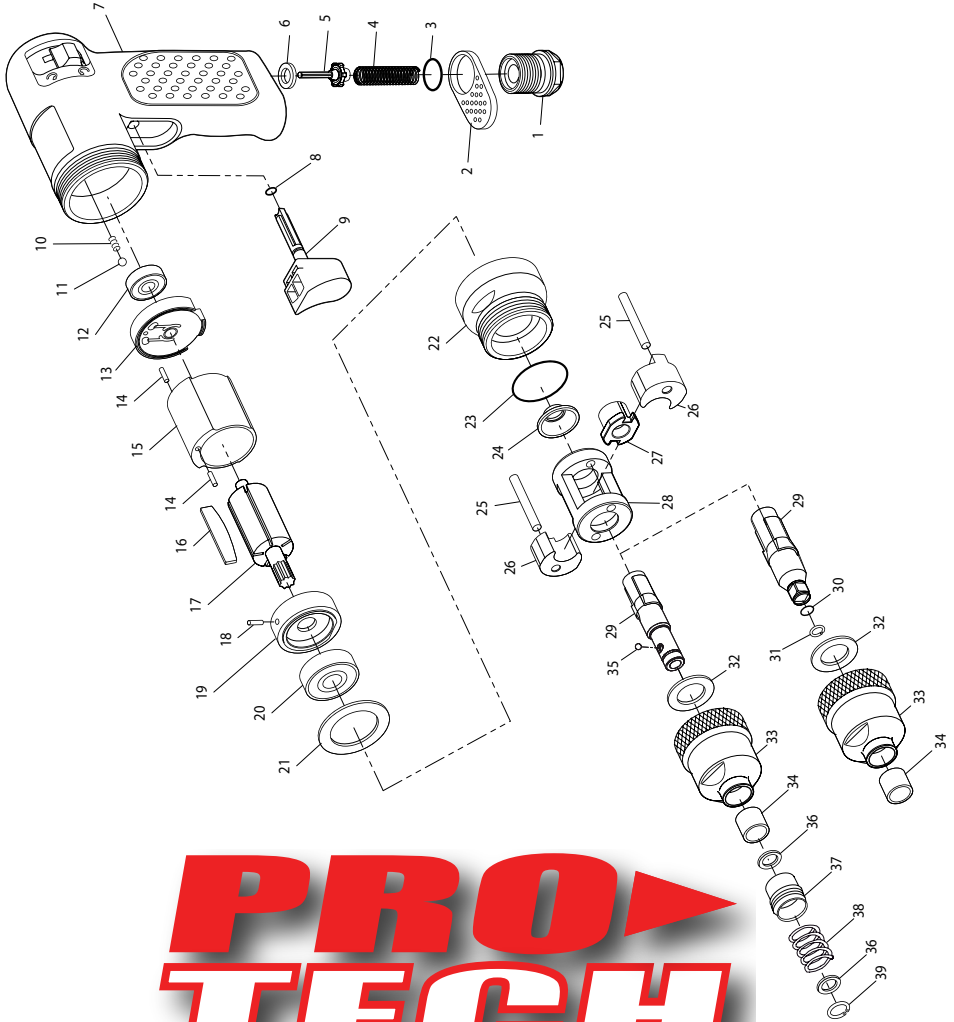


2101XP, 2101XP-QC and 2102XP Impact Wrench Exploded View



**PRO
TECH**

(Dwg. 16591562)

Professional Technologies Sweden AB
Munkerödsvägen 3
444 32 STENUNGSUND
Tel 0303-89 135 - www.protech.nu



47132725
Edition 1
March 2010

2101XP, 2101XP-QC and 2102XP Impact Wrench Parts List

Item	Part Description	Part Number	Item	Part Description	Part Number
1	Inlet Bushing with Screen	3103-A465	19	Front Plate	2101-11
2	Deflector	3103-23	20	Ball Bearing	3103-24
3	O-Ring	3103-65	21	Washer	2101-248
4	Valve Spring	3103-51	22	Clamp Nut	2101-27
5	Valve	3103-302	23	O-Ring	2101-65
6	Valve Seat	3103-303	24	Rear Washer	2101-248
7	Motor Housing Assembly for 2101XP	2101-A40	25	Hammer Pin (2)	2101-704-2
	Housing with Reverse valve	---	26	Hammer Dogs (2)	2101-724-2
	Model label	---	27	Cam	2101-721
	Warning label	---	28	Hammer Cage	2101-703
	Motor Housing Assembly for 2101XP-QC	2101-QC-A40	29	Anvil	
	Housing with Reverse valve	---		for 2101XP	2101-314
	Model label	---		for 2101XP-QC (1/4" Hex)	2101-QC-314
	Warning label	---		for 2102XP (3/8" Square)	2102-314
	Motor Housing Assembly for 2102XP	2102-A40	30	O-Ring	
	Housing with Reverse valve	---		for Models 2101XP	2101-65A
	Model label	---		for Models 2102XP	2102-65A
	Warning label	---	31	Socket O-Ring	
8	O-Ring	3103-65A		for Models 2101XP	2101-65B
9	Trigger	3103-93		for Models 2102XP	2102-65B
10	Spring	7804-250	32	Washer	2101-248A
11	Steel Ball	7804-722	33	Hammer Case Assembly	2101-A727
12	Ball Bearing	7804-105	34	Spindle Bush	2101-330
13	Rear Plate	7804-12	35	Ball (for Model 2101XP-QC)	2102-QC-722
14	Roll Pin (2)	3103-120-2	36	Spacer (for Model 2101XP-QC) (2)	2101-QC-248
15	Cylinder	7804-3	37	Sleeve (for Model 2101XP-QC)	2102-QC-930
16	Rotor Blade (5)	3103-42-5	38	Spring (for Model 2101XP-QC)	2101-QC-250
17	Rotor	2101-53	39	Retaining Ring (for Model 2101XP-QC)	2101-QC-18
18	Roll Pin	3103-15			

* Not illustrated

Parts and Maintenance

When the life of the tool has expired, it is recommended that the tool be disassembled, degreased and parts be separated by material so that they can be recycled.

Tool repair and maintenance should only be carried out by an authorized Service Center.

Refer all communications to the nearest **Ingersoll Rand** Office or Distributor.

Related Documentation

For additional information refer to:

Product Safety Information Manual 04580916.

Product Information Manual 47132717.

Manuals can be downloaded from www.ingersollrandproducts.com

