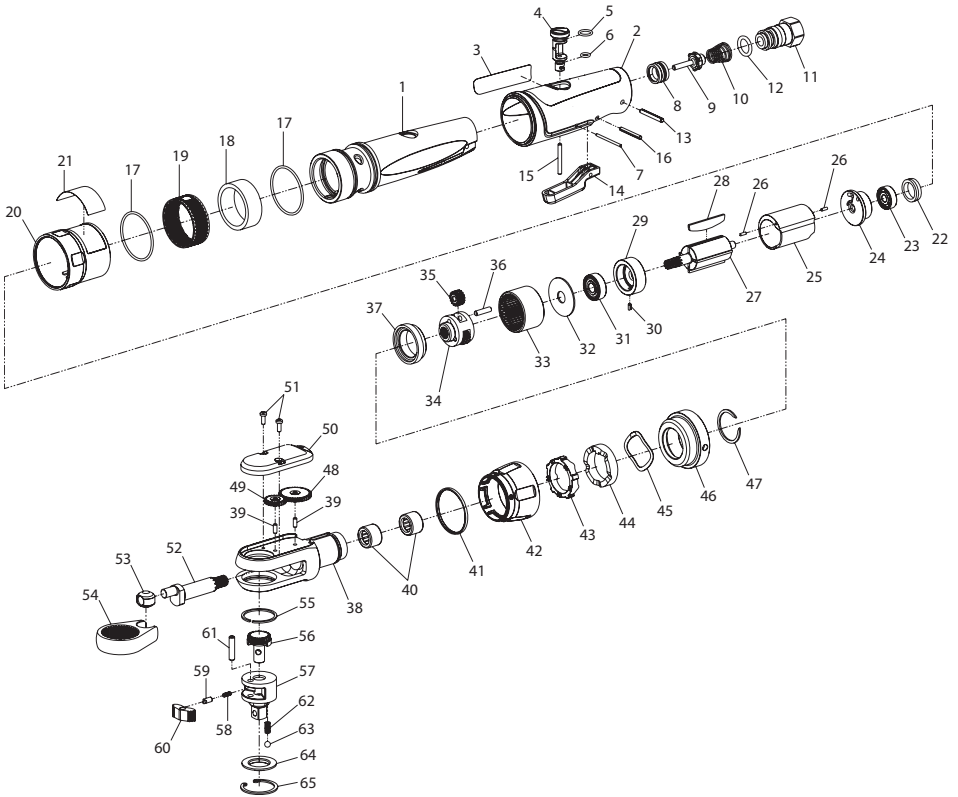


1207MAX Series Air Ratchet Wrench - Exploded View



(Dwg. 45653425)

PRO TECH

Professional Technologies Sweden AB
Munkerödsvägen 3
444 32 STENUNGSUND
Tel 0303-89 135 - www.protech.nu



45657269
Edition 2
April 2010

1207MAX Series Air Ratchet Wrench - Parts List

Item	Part Description	Part Number	Item	Part Description	Part Number
	Housing Assembly			Ratchet Housing Assembly	1207-A322
	for 1207MAX-D3	1207MAX-D3-A40	38	Ratchet Housing	---
	for 1207MAX-D4	1207MAX-D4-A40	39	Gear Pins (2)	---
1	Housing	---	40	Crankshaft Needle Bearings (2)	---
	Composite Housing Assembly			Reversing Collar Kit	1207-K127
	for 1207MAX-D3	1207MAX-D3-A747	41	Ring	---
	for 1207MAX-D4	1207MAX-D4-A747	42	Collar	---
2	Composite Housing	---	43	Indexer	---
3	Nameplate Label	---	44	Cam	---
	for 1207MAX-D3	1207MAX-D3-301	45	Spring	---
	for 1207MAX-D4	1207MAX-D4-301	46	Coupling Nut	1207-27
	Valve Kit	1207-VK	47	Retaining Ring	1207-118
4	Power Regulator	---		Reversing Gear Kit	1207-K82
5	Regulator O-Ring (top)	---	48	Gear (large)	---
6	Regulator O-Ring (bottom)	---	49	Gear (small)	---
7	Regulator Retaining Pin	---	50	Cover	---
8	Throttle Valve Seat	---	51	Screw (2)	---
9	Throttle Valve	---	52	Crankshaft	1207-35
10	Throttle Valve Spring	---	53	Drive Bushing	170-36
	Inlet Bushing Assembly	1207-A565	54	Yoke	1207-37
11	Inlet Bushing	---		Ratchet Head Kit	
12	Inlet Bushing O-Ring	---		for 1207MAX-D3	1207-D3-TRK1
13	Inlet Bushing Retaining Pin	---		for 1207MAX-D4	1207-D4-TRK1
	Throttle Lever Kit	1207-LK	55	Friction Ring	109XPA-427
14	Throttle Lever	---	56	Reverse Button	1207-38
15	Throttle Plunger	---	57	Anvil Assembly	
16	Throttle Lever Retaining Pin	---		for 1207MAX-D3	109XPA-D44
17	Housing O-Ring	107XPA-367		for 1207MAX-D4	1099XPA-D44
	Muffler Kit	1207-K311		Pawl Kit	109XPA-K43
18	Muffler	---	58	Lock Spring	---
19	Muffler Screen	---	59	Lock Pin	---
	Exhaust Deflector Assembly	1207-A123	60	Pawl	---
20	Exhaust Deflector	---	61	Pawl Retaining Pin	---
21	Warning Label	WARNING-34-99		Spring Kit	109XPA-SK
	Motor Assembly	1207-MK	62	Friction Spring (3 per kit)	---
22	End Cap	---	63	Friction Ball (3 per kit)	---
23	Rear Rotor Bearing	---	64	Thrust Washer	---
24	Rear End Plate	---	65	Retaining Ring	---
25	Cylinder	---	*	Oil - Ingersoll Rand No. 10 (4 oz. bottle)	10Z4
26	Motor Alignment Pins (2)	---	*	Grease	
27	Rotor	---		IR # 67 (1 lb can) - for Gearing	67-1 LB
28	Vanes (set of 4)	170-42-4		IR # 67 (8 lb can) - for Gearing	67 8 LB
29	Front End Plate	---		IR # 70 (1 lb can) - for Ratchet Head	70 1 LB
30	Motor Alignment Pin	---		IR # 70 (8 lb can) - for Ratchet Head	70 8 LB
31	Front Rotor Bearing	---	*	Spline Wrench (for removal of item 33)	170-SW
32	Spacer	---	*	Coupling Nut Wrench (for removal of item 46)	1105-CW
	Gearing Kit	1207-GK	*	Handle Clamp Tool	1207-598
33	Internal Gear	---			
34	Spindle	---			
35	Planet Gear (3 per kit)	---			
36	Planet Gear Pin (3 per kit)	---			
37	Spacer	1207-80			

* Not Illustrated.

Parts and Maintenance

When the life of the tool has expired, it is recommended that the tool be disassembled, degreased and parts be separated by material so that they can be recycled.

Tool repair and maintenance should only be carried out by an authorized Service Center.

Refer all communications to the nearest **Ingersoll Rand** Office or Distributor.

Related Documentation

For additional information refer to:

Air Ratchet Wrench Safety Information Manual 04580361

Air Ratchet Wrench Product Information Manual 45657244.

Manuals can be downloaded from www.ingersollrandproducts.com.



www.ingersollrandproducts.com
© 2010 **Ingersoll Rand** Company

45657269
Edition 2
April 2010